

F|S

FABRICS-STORE.COM

Our linen is nothing short of addicting

SLOAN JUMPSUIT



STYLE UP A NOTCH

The Sloan jumpsuit is the perfect all-in-one outfit with all the ease of a dress, just that much cooler! Wear it with trainers or heels, all year long, from day to night.

Available in Ladies Sizes 0/2 to 28/30

866.620.2008 ASK@FABRICS-STORE.COM FABRICS-STORE.COM

MASHA IS WEARING IL019 ROYAL BLUE SOFTENED - 100% LINEN (5.3 OZ/YD²)



Our lovely model Masha is wearing Size 4/6.

SLOAN PATTERN

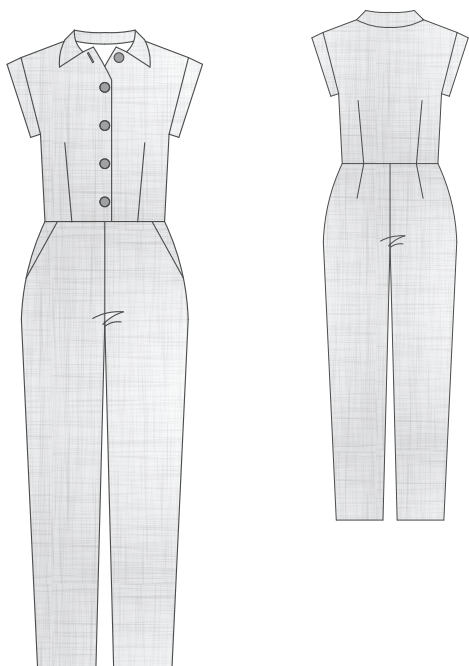
Fitted throughout the body, it hugs your curves at all the right places. Slightly cropped legs, zipper closure, contrasting buttons, cuffed sleeves, and convertible collar – are just a few details that make this style both chic and functional.

Sized for ladies 0/2 to 28/30

*Simple step-by-step instructions on our blog
The Thread at Fabrics-Store.com*

PATTERN DETAILS

#FABRICSSTORESLOANPATTERN



SLOAN PATTERN

Ladies Duo Sizes: 0/2 to 28/30

- Button front bodice.
- Semi-fitted.
- Slant pockets.
- Cuffed armholes.
- Shirt collar.

SEWING INSTRUCTIONS

This pattern is featured on our blog “The Thread” at Fabrics-Store.com. There you will find step-by-step photo instructions and can ask questions, post comments, or share your progress. Simply visit: blog.fabrics-store.com and enter “Sloan Pattern” in the search box.

SIZING & YARDAGE

Ladies Size Guide Based on Body Measurements in Inches

Size	0/2 (XS)	4/6 (S)	8/10 (M)	12/14 (L)	16/18 (XL)	20/22 (2X)	24/26 (3X)	28/30 (4X)
Bust	33-34	35-36	37-38	39-40	42-44	46-48	50-52	54-56
Waist	25-26	27-28	29-30	31-32	34-36	38-40	42-44	46-48
Hip	35-36	37-38	39-40	41-42	44-46	48-50	52-54	56-58

Finished Garment Measurements - Approximate in Inches

Size	0/2 (XS)	4/6 (S)	8/10 (M)	12/14 (L)	16/18 (XL)	20/22 (2X)	24/26 (3X)	28/30 (4X)
Bust	37.5	39.5	42	44.5	48.5	52.5	57	61.5
Waist	27	29	31.5	34	38	42	46.5	51
Hips	38	40	42.5	45	49	53	57.5	62

Estimated Yardage* - 54" Width Linen

Size	0/2	4/6	8/10	12/14	16/18	20/22	24/26	28/30
Yardage	3 Yards				3.5 Yards			

*ALLOW UP TO 10% EXTRA FABRIC FOR SHRINKAGE.

ALL SEAM ALLOWANCES ARE INCLUDED AND NOTED ON THE PATTERN AND IN THE TUTORIAL.

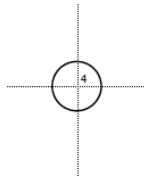
“Sloan” Sewing Pattern

For sewing instructions visit: blog.fabrics-store.com and enter “Sloan Pattern” in the search bar.

2 Inch
Square to
Check Print
Accuracy

PRINT ONLY THIS PAGE FIRST TO CHECK SCALE
IMPORTANT! PRINT AT ACTUAL SIZE, 100%, OR
NO SCALING

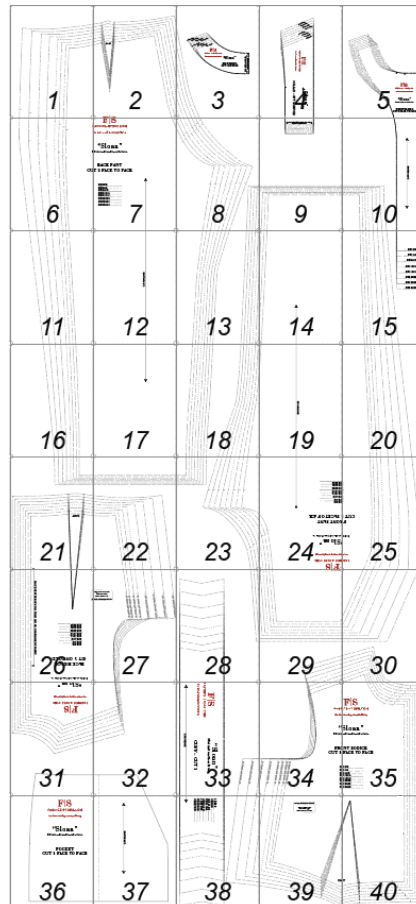
Formatted for paper sizes A4 and Letter.



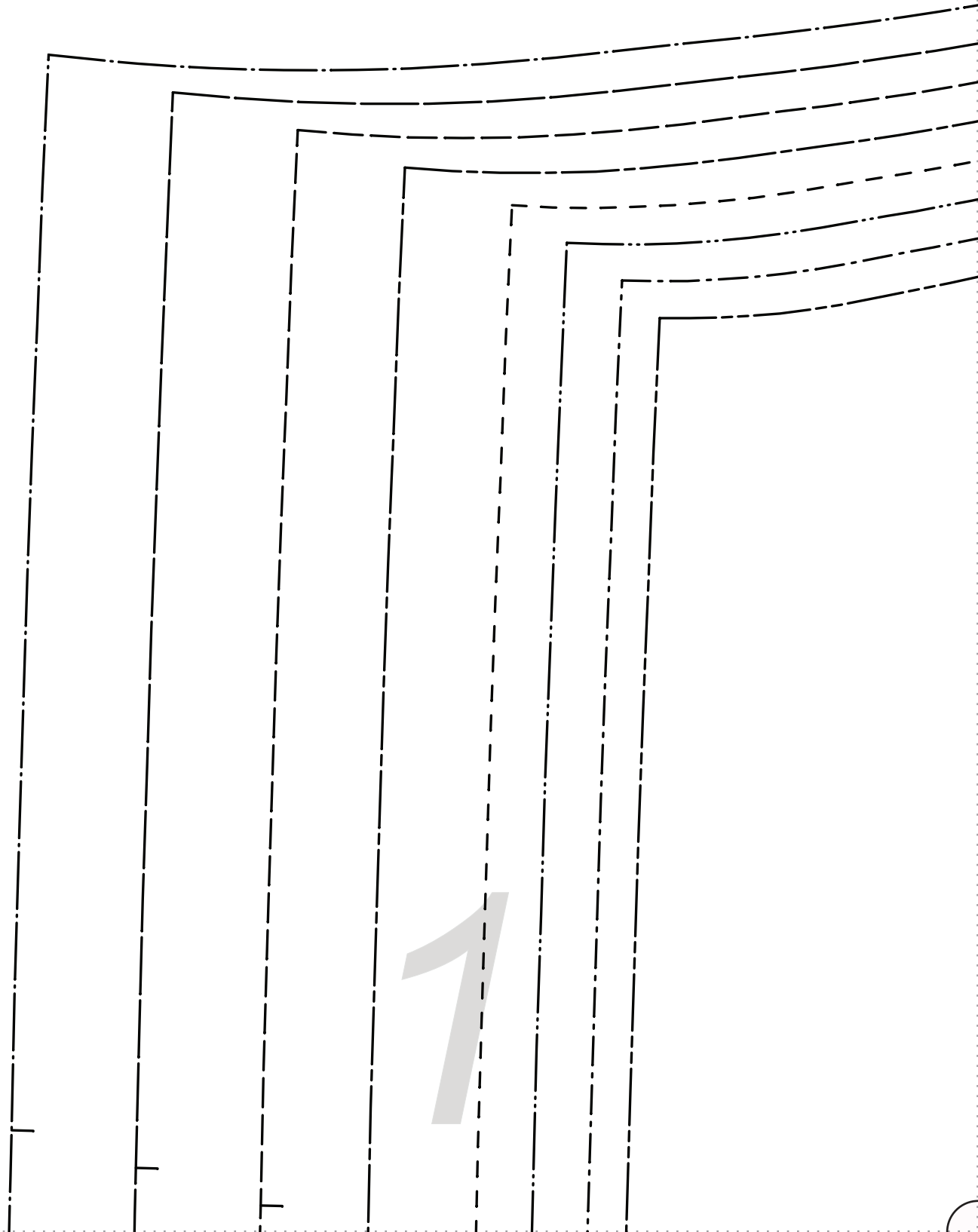
Simply overlap the page margins and align the markings in each corner to complete the circle and tape in place.

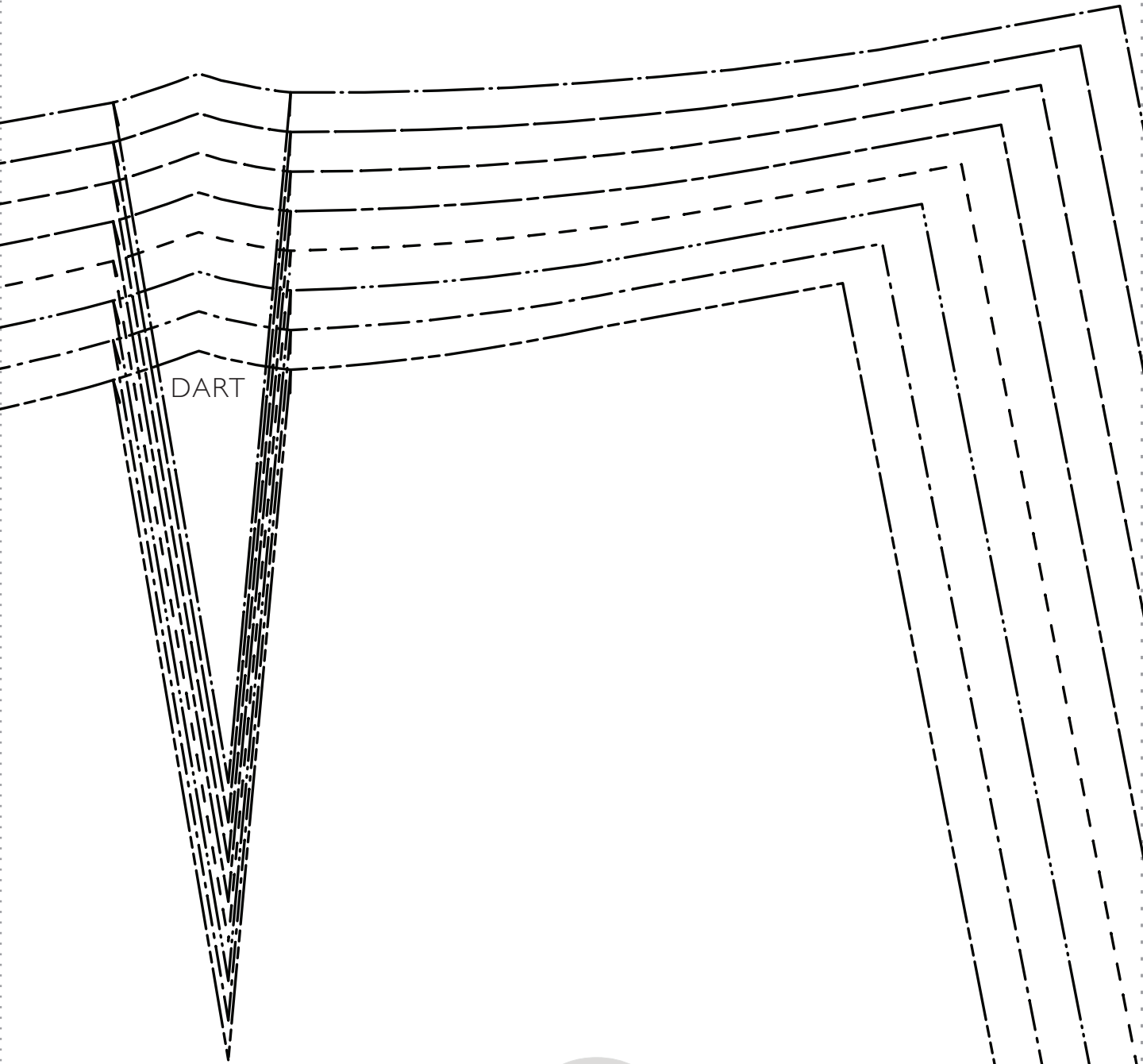
Layered PDF:

This pattern has embedded layers so you can print all sizes or a single size. See you .pdf viewers 'Layers' menu.



For sewing instructions visit: blog.fabrics-store.com and enter “Sloan Pattern” in the search bar.





DART

2

SIZE 0/2
SIZE 4/6
SIZE 8/10
SIZE 12/14
SIZE 16/18
SIZE 20/22
SIZE 24/26
SIZE 28/30

F|S

FABRICS-STORE.COM

Our linen is nothing short of addicting

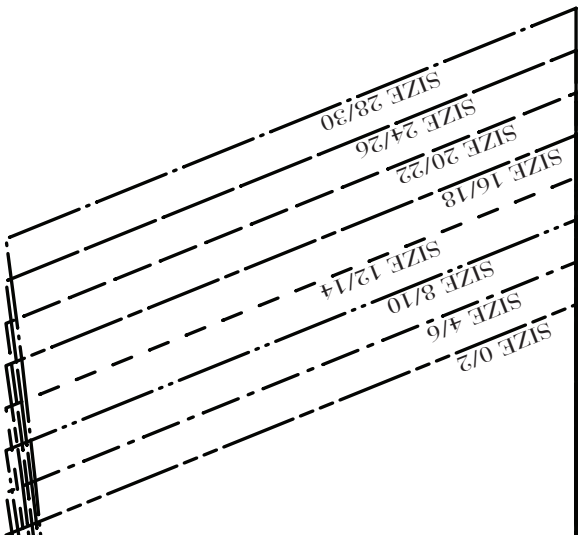
“Sloan”

BACK FACING
CUT 1 ON FOLD

PLACE ON FOLD

ALONG GRAINLINE

3



F|S

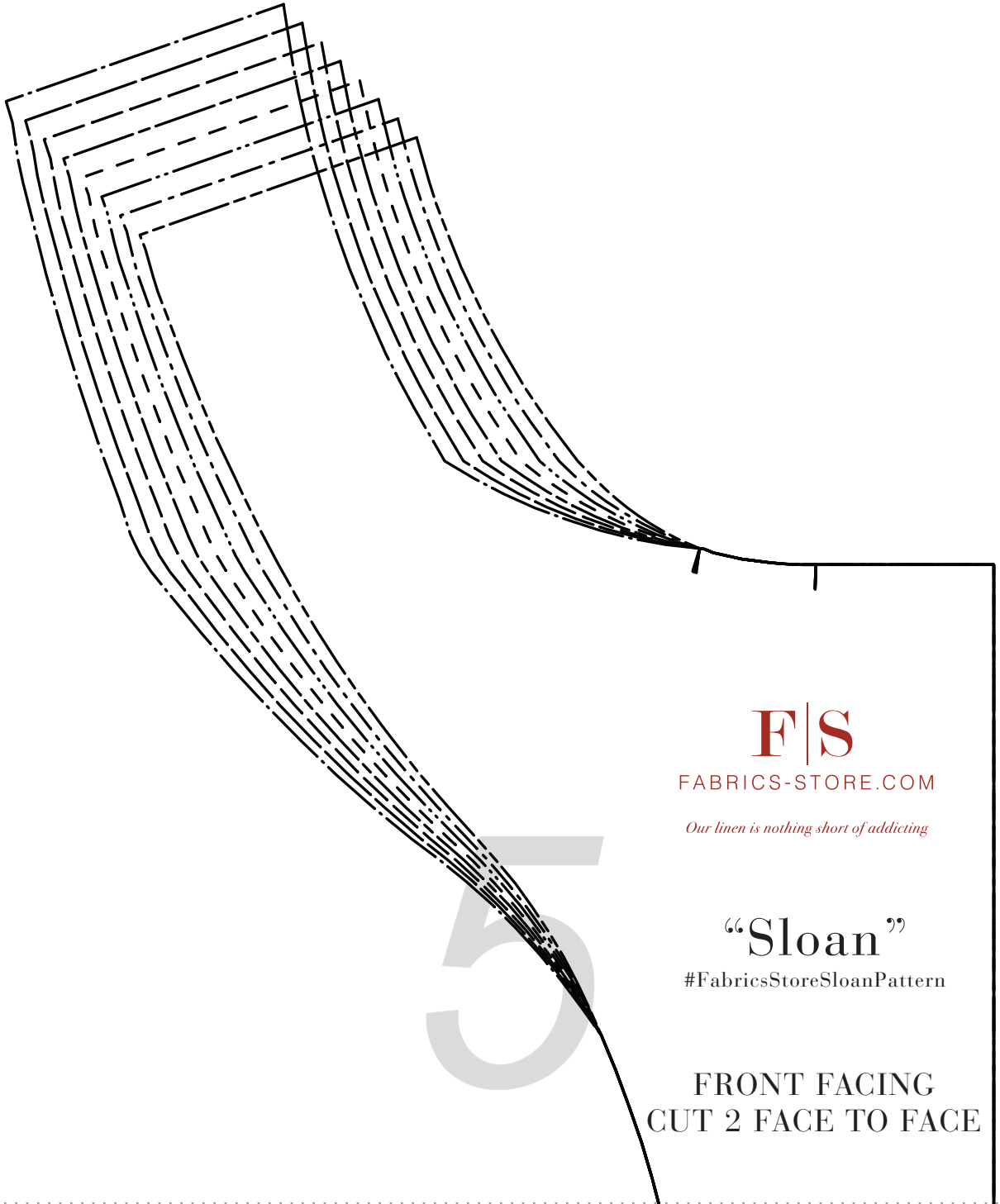
FABRICS-STORE.COM

Our linen is nothing short of addicting

“Sloan”

#FabricStoreSloanPattern

COLLAR – CUT 2 ON FOLD



F|S

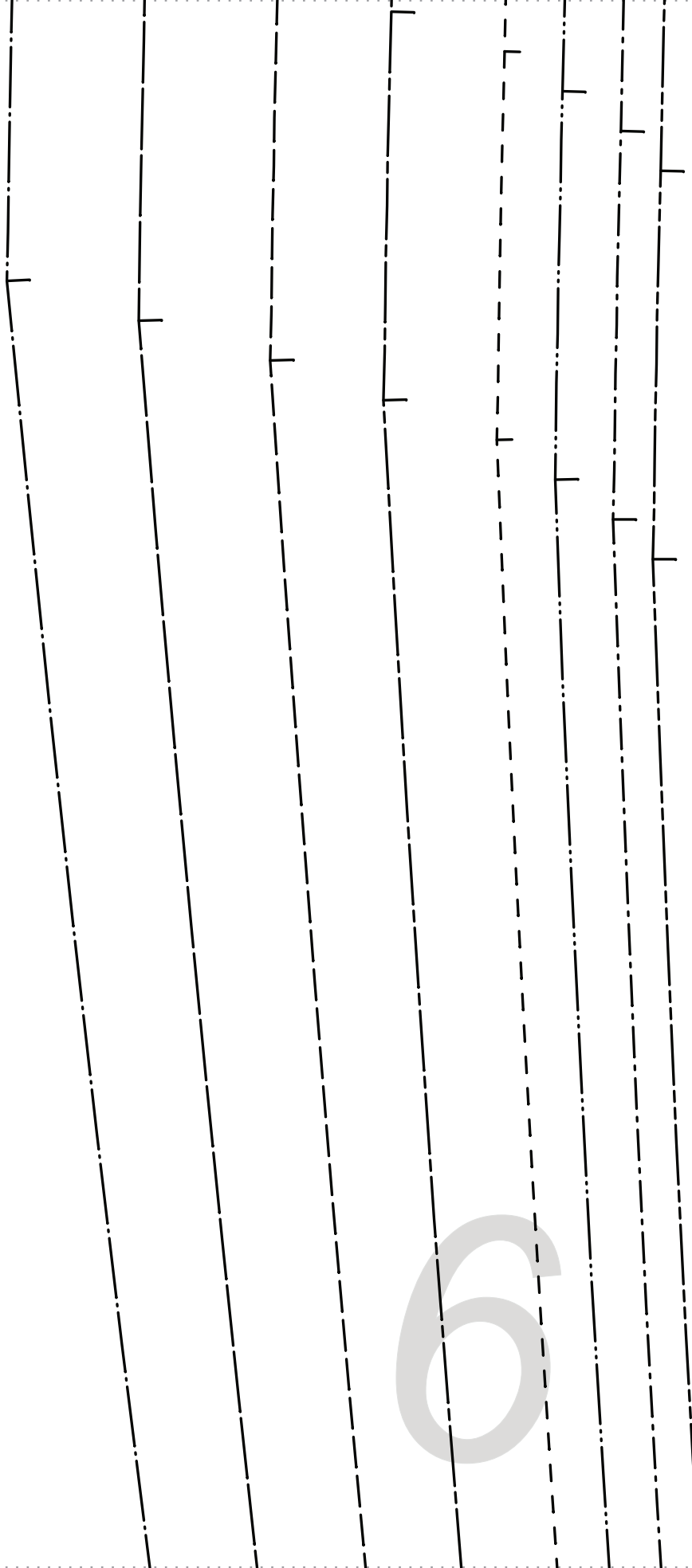
FABRICS-STORE.COM

Our linen is nothing short of addicting

“Sloan”

#FabricStoreSloanPattern

FRONT FACING
CUT 2 FACE TO FACE



6

CU

#

Our linen is nothing short of addicting

“Sloan”

#FabricsStoreSloanPattern

BACK PANT T 2 FACE TO FACE

SIZE 0/2 _____

SIZE 4/6 _____

SIZE 8/10 _____

SIZE 12/14 _____

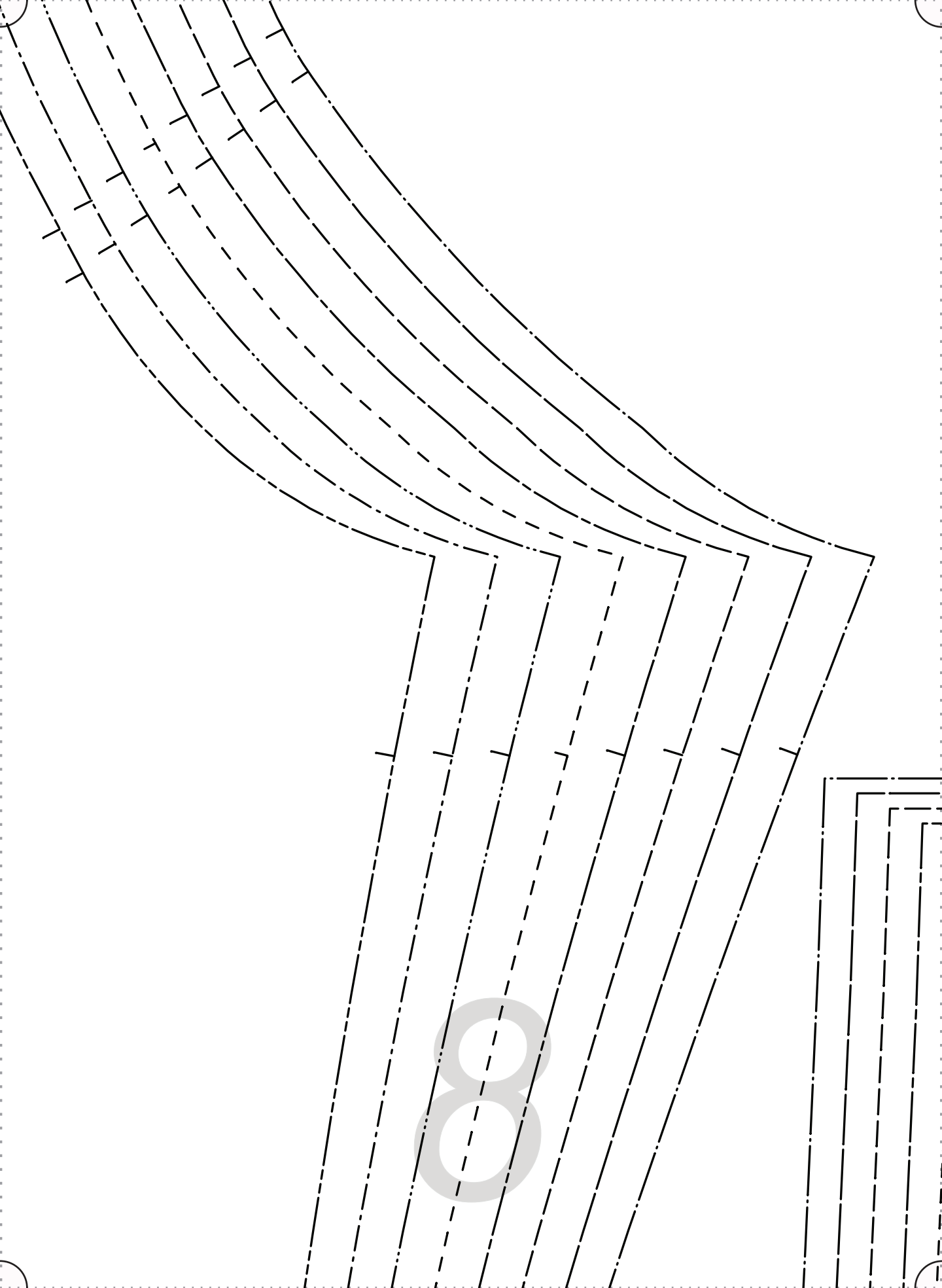
SIZE 16/18 _____

SIZE 20/22 _____

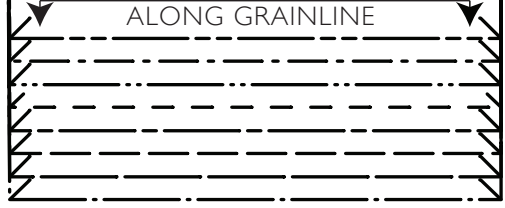
SIZE 24/26 _____

SIZE 28/30 _____

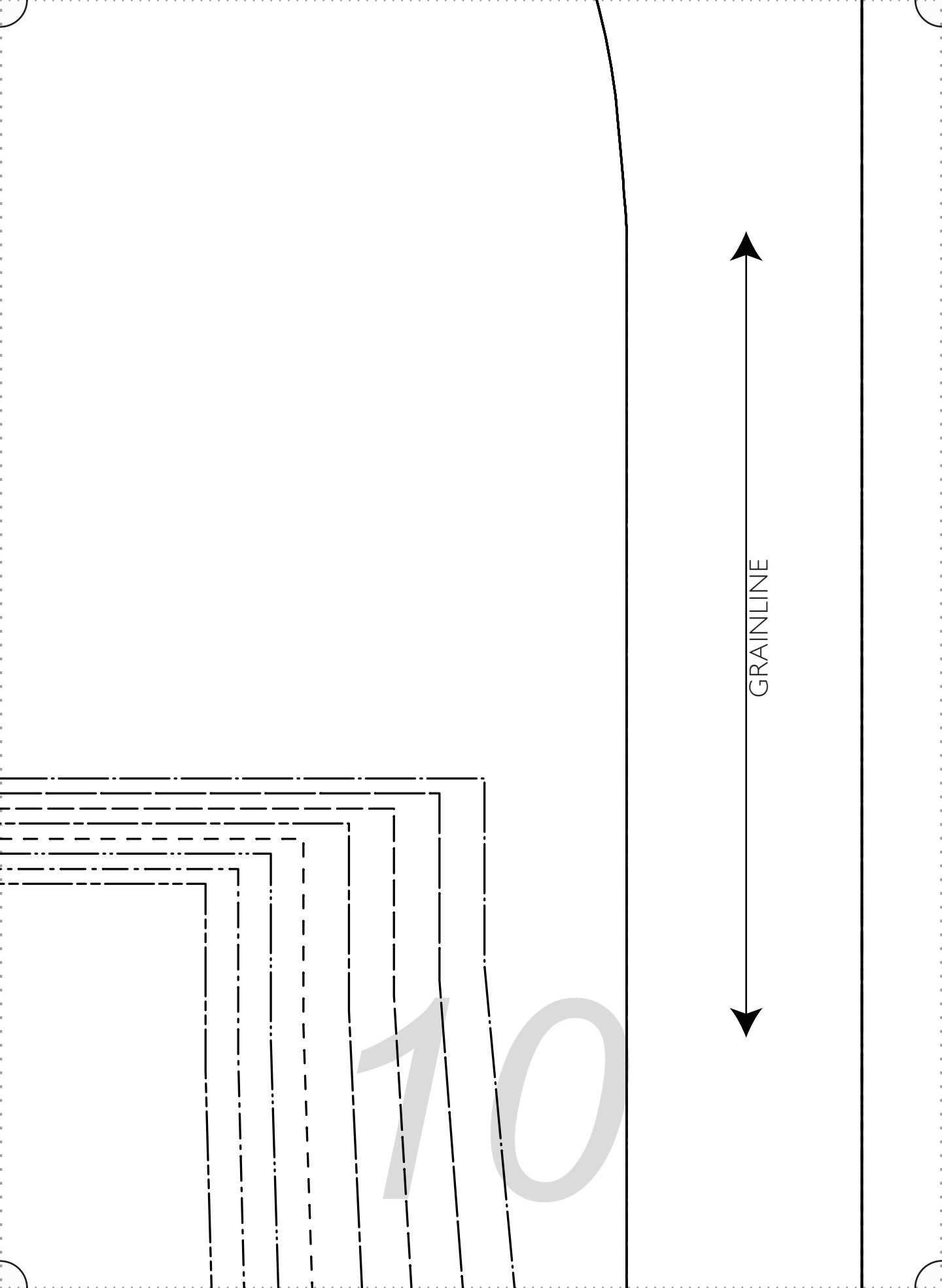




PLACE CENTER BACK ON FOLD
ALONG GRAINLINE



9



GRAINLINE

10

11

12

GRAINLINE

1 3

14



| SIZE 0/2

| SIZE 4/6

| SIZE 8/10

| SIZE 12/14

| SIZE 16/18

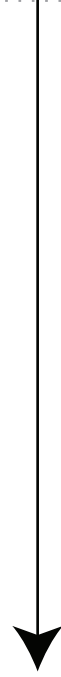
| SIZE 20/22

| SIZE 24/26

| SIZE 28/30

15

16



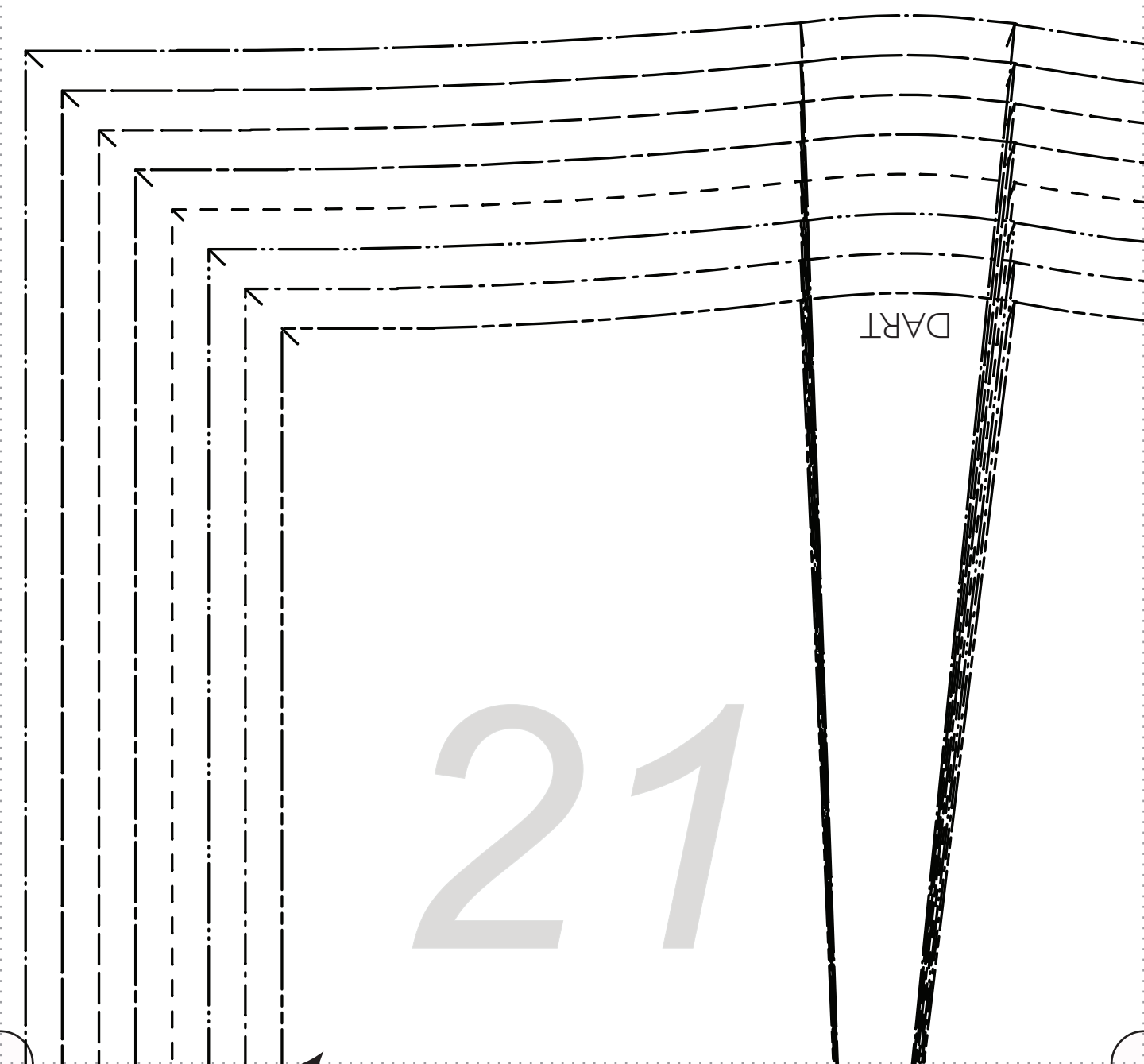
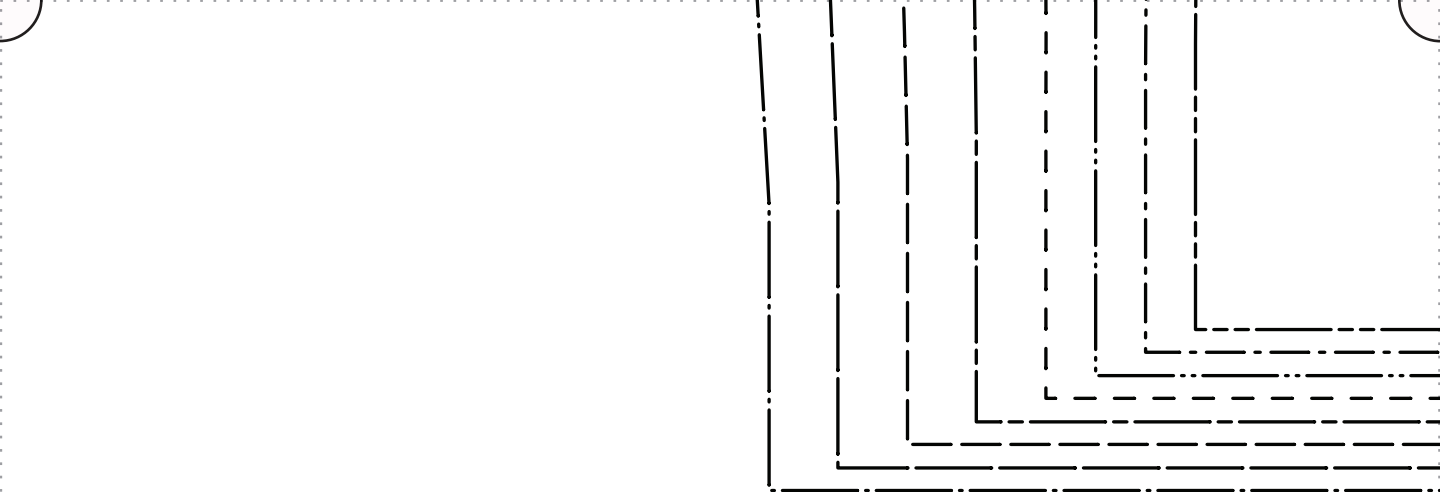
17

18

GRAINLINE

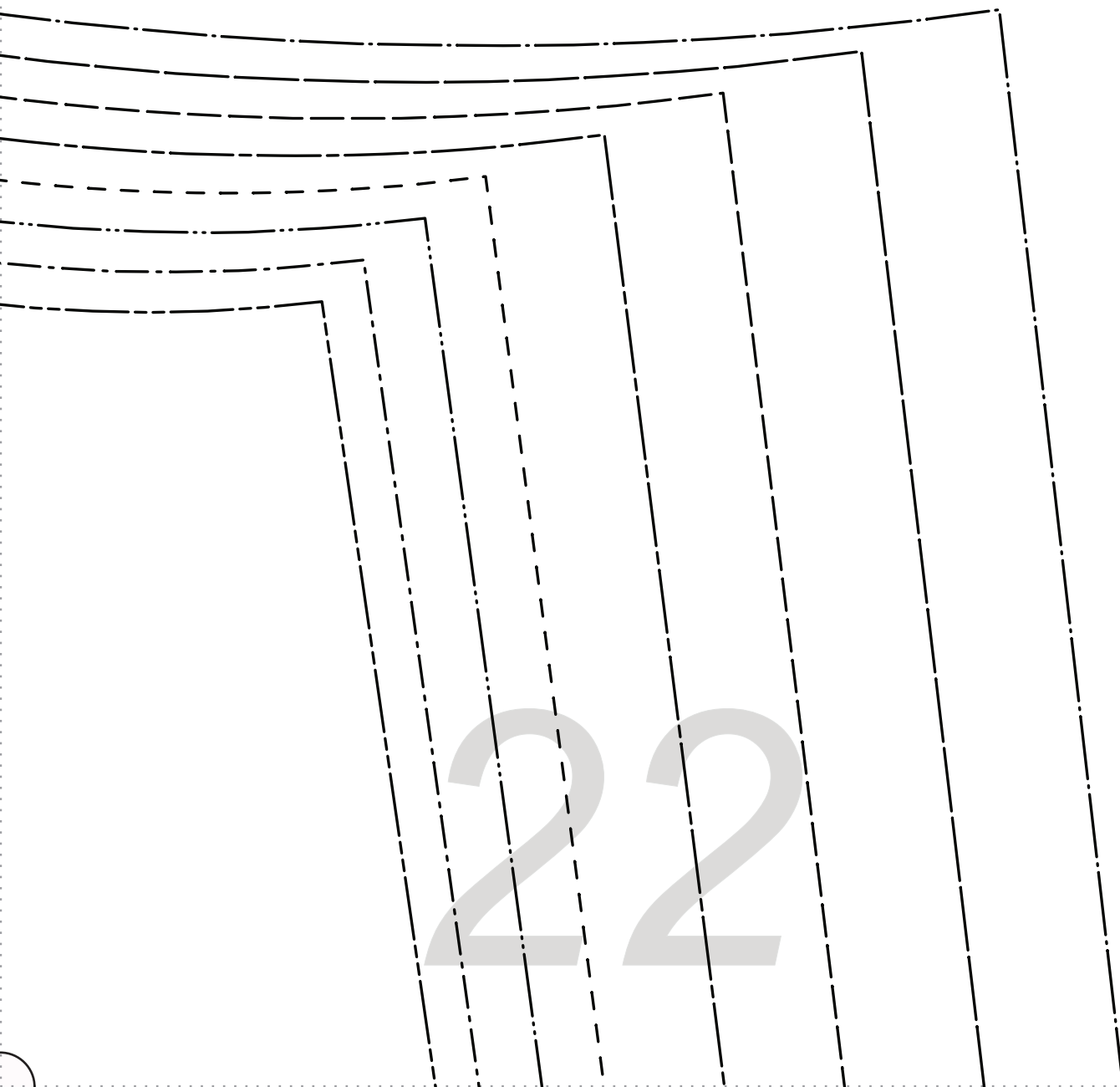
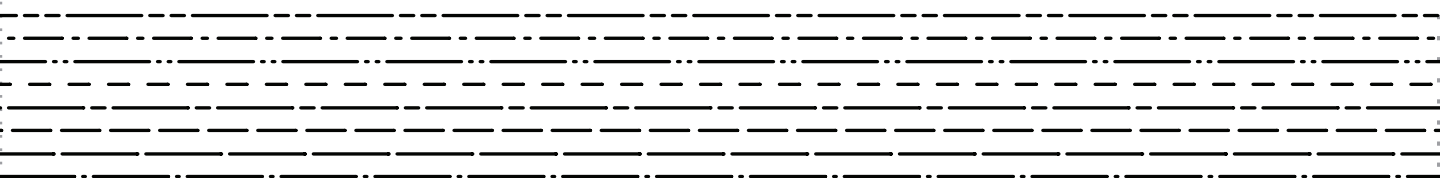
19

20

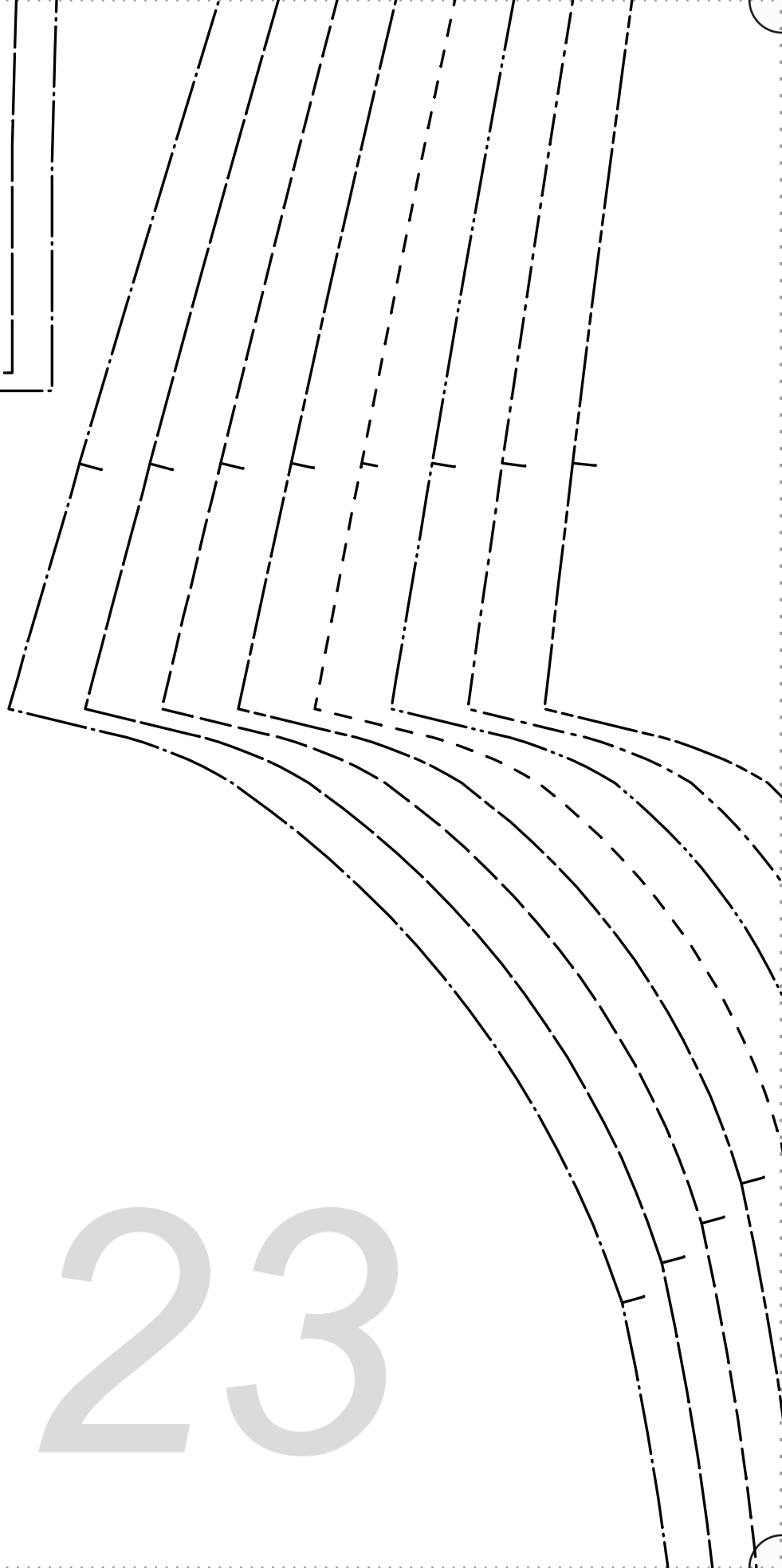
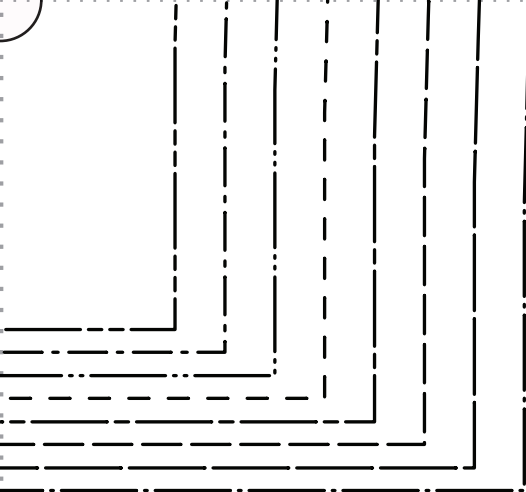


DART

21



22



23

is nothing short of adding

24

“Sloan”

icsStoreSloanPattern

FRONT PANT

FACE TO FACE



ZE 0/2

ZE 4/6

ZE 8/10

ZE 12/14

ZE 16/18

ZE 20/22

ZE 24/26

ZE 28/30

SH
SH
SH
SH
SH
SH
SH
SH
SH

FR
CUT 2

#Fabr

66

Our line

FABR

25

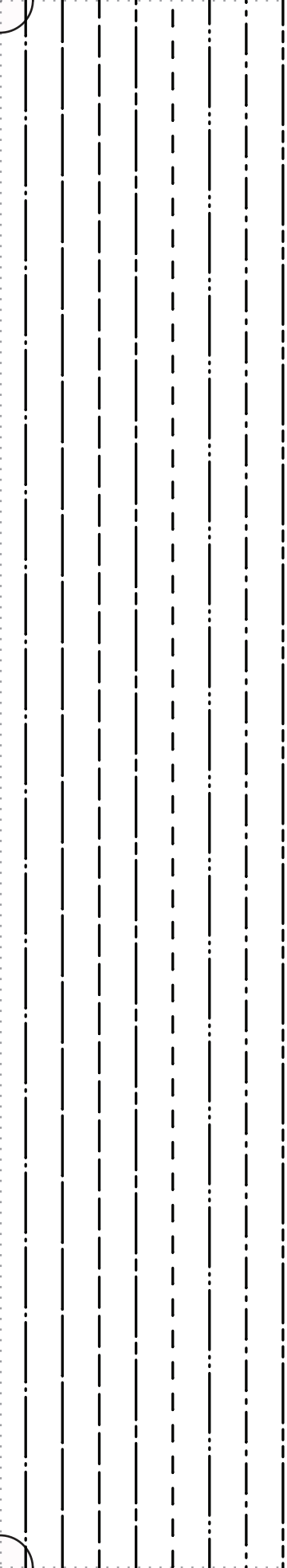
BACK BODICE CUT 1 ON FOLD

26

SIZE 0/2
SIZE 4/6
SIZE 8/10
SIZE 12/14
SIZE 16/18
SIZE 20/22
SIZE 24/26
SIZE 28/30

GRAINLINE

PLACE CENTER BACK ON FOLD ALONG GRAINLINE OF FABRIC



ZIP NOTCH (LEFT SIDE ONLY)

ZIP NOTCH (LEFT SIDE ONLY)

ZIP NOTCH (LEFT SIDE ONLY)

ZIP NOTCH (LEFT SIDE ONLY)

ZIP NOTCH (LEFT SIDE ONLY)

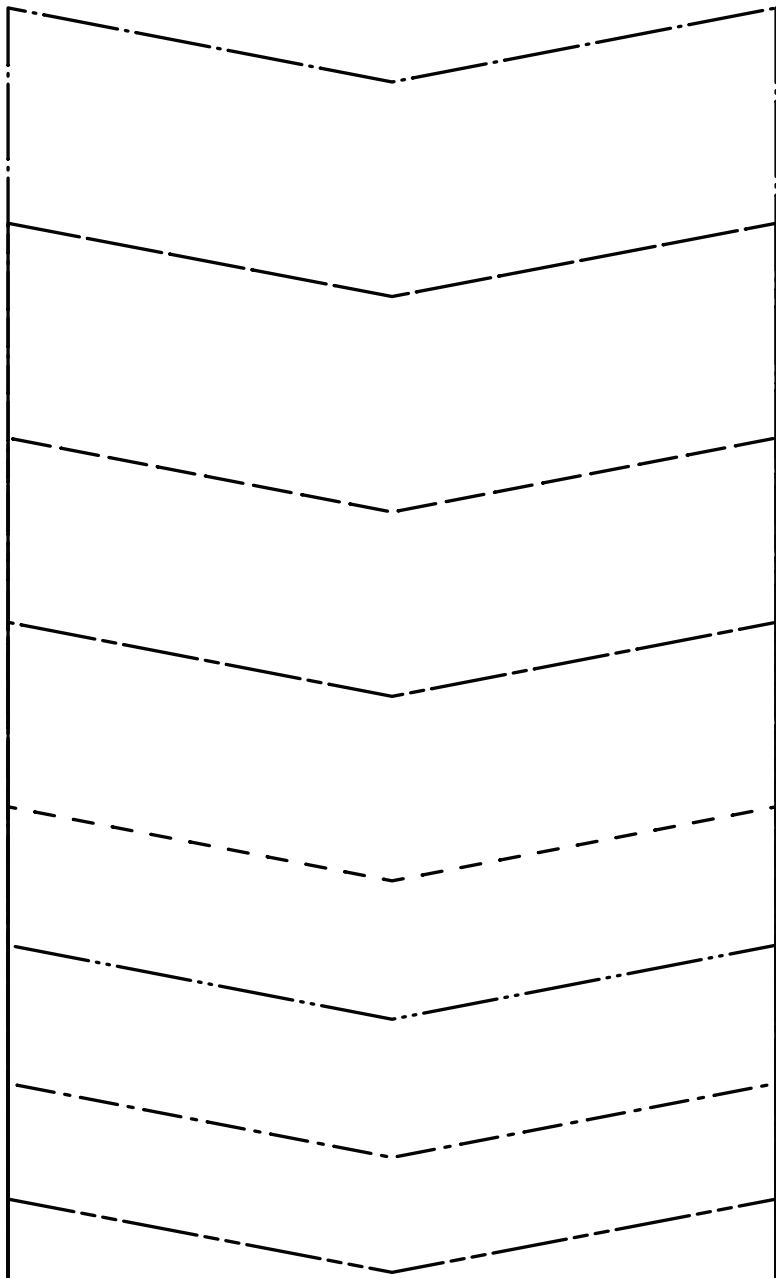
ZIP NOTCH (LEFT SIDE ONLY)

ZIP NOTCH (LEFT SIDE ONLY)

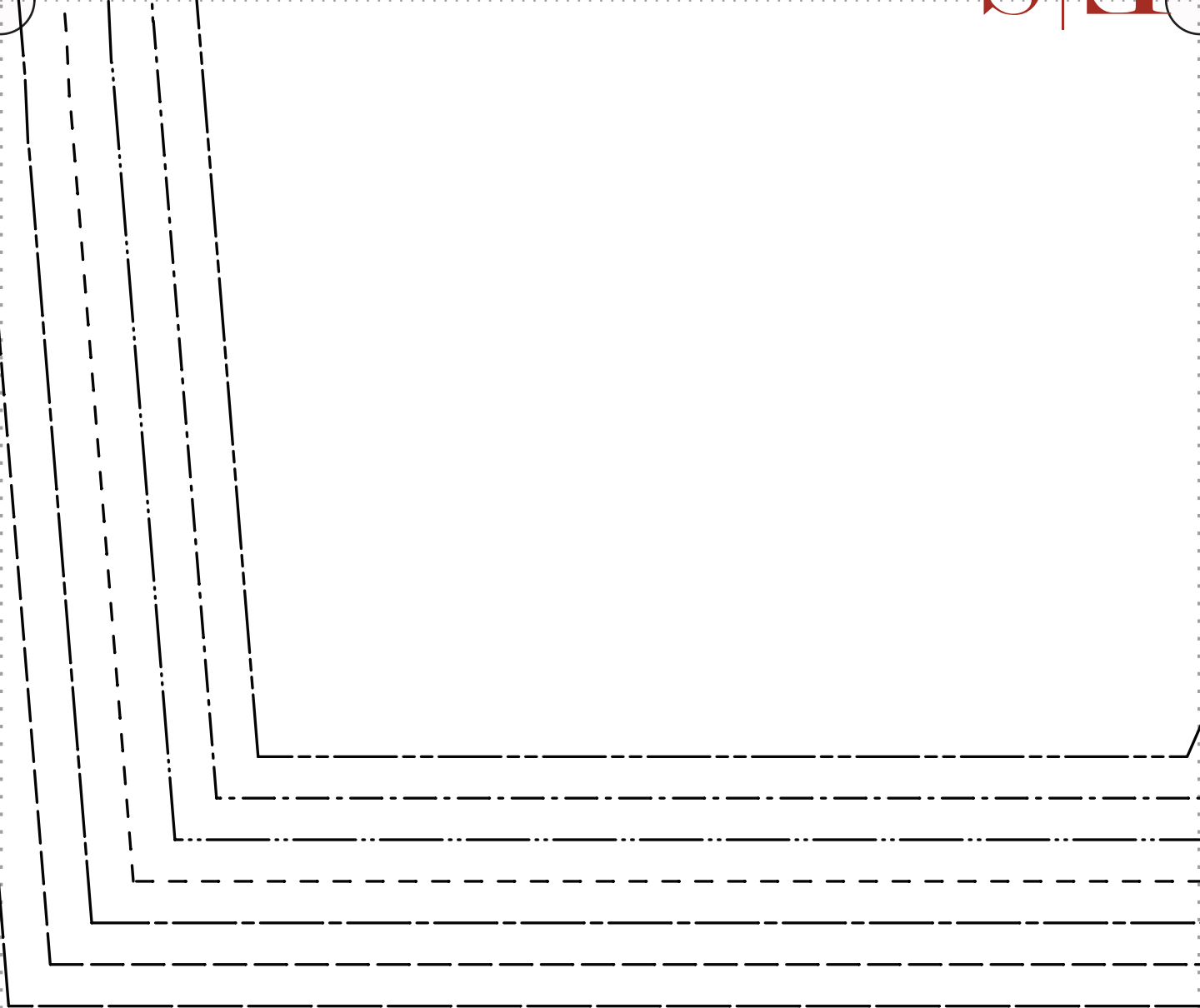
ZIP NOTCH (LEFT SIDE ONLY)

27

All Seam Allowances Included
Main seams: 3/8"
Neckline: 3/8"
Bottom Hem: 1 1/2"

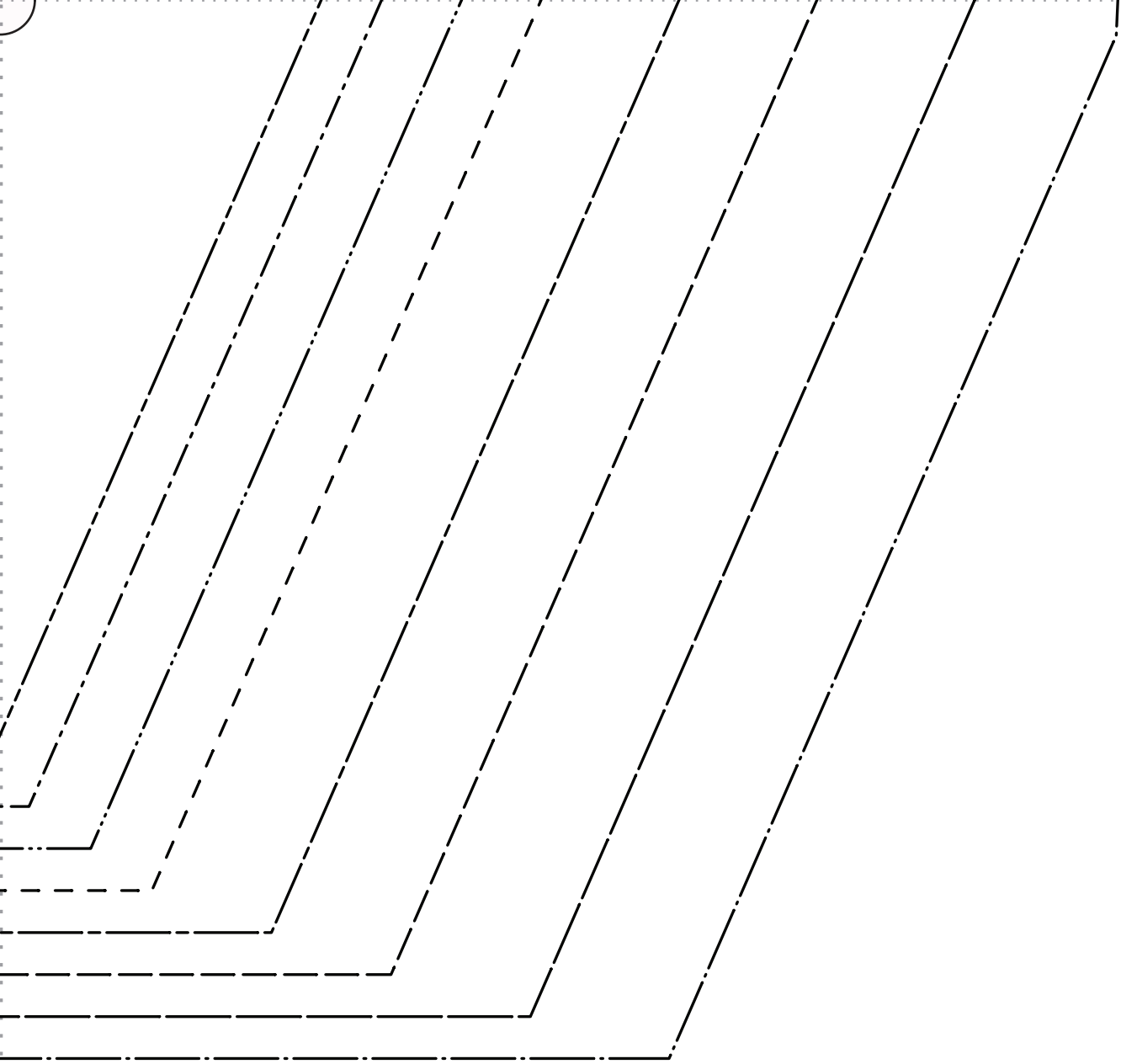


28



29





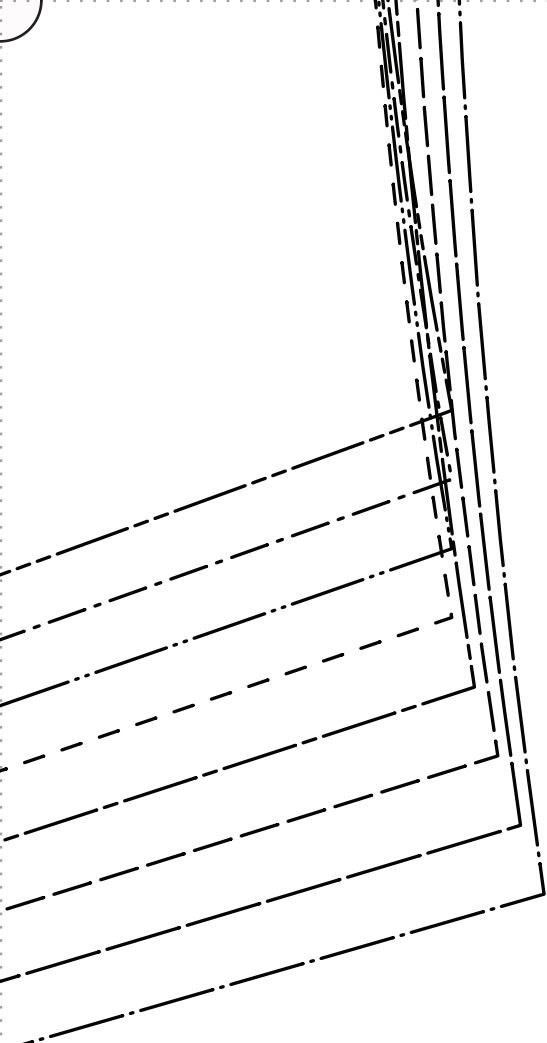
“S|eam”

Our linen is nothing short of addicting

FABRICS-STORE.COM

F|S

31



32



F|S

FABRICS-STORE.COM

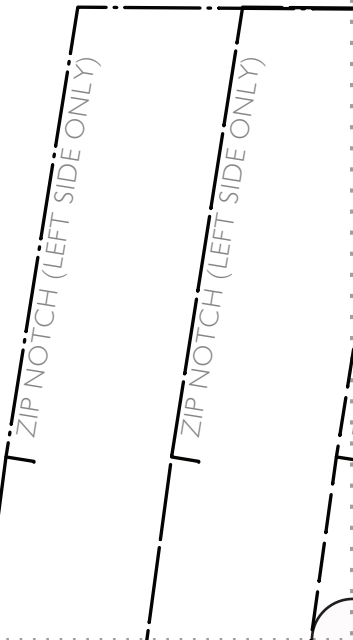
Our linen is nothing short of addicting

“Sloan”

#FabricsStoreSloanPattern

CUFF – CUT 2

GRAINLINE



ZIP NOTCH (LEFT SIDE ONLY)
ZIP NOTCH (LEFT SIDE ONLY)
ZIP NOTCH (LEFT SIDE ONLY)
ZIP NOTCH (LEFT SIDE ONLY)
ZIP NOTCH (LEFT SIDE ONLY)
ZIP NOTCH (LEFT SIDE ONLY)

34

FABR

Our line

“

#Fabr

FRG
CUT 2

S
S
S
S
S
S
S
S
S

F|S

RICS-STORE.COM

en is nothing short of addicting

Sloan™

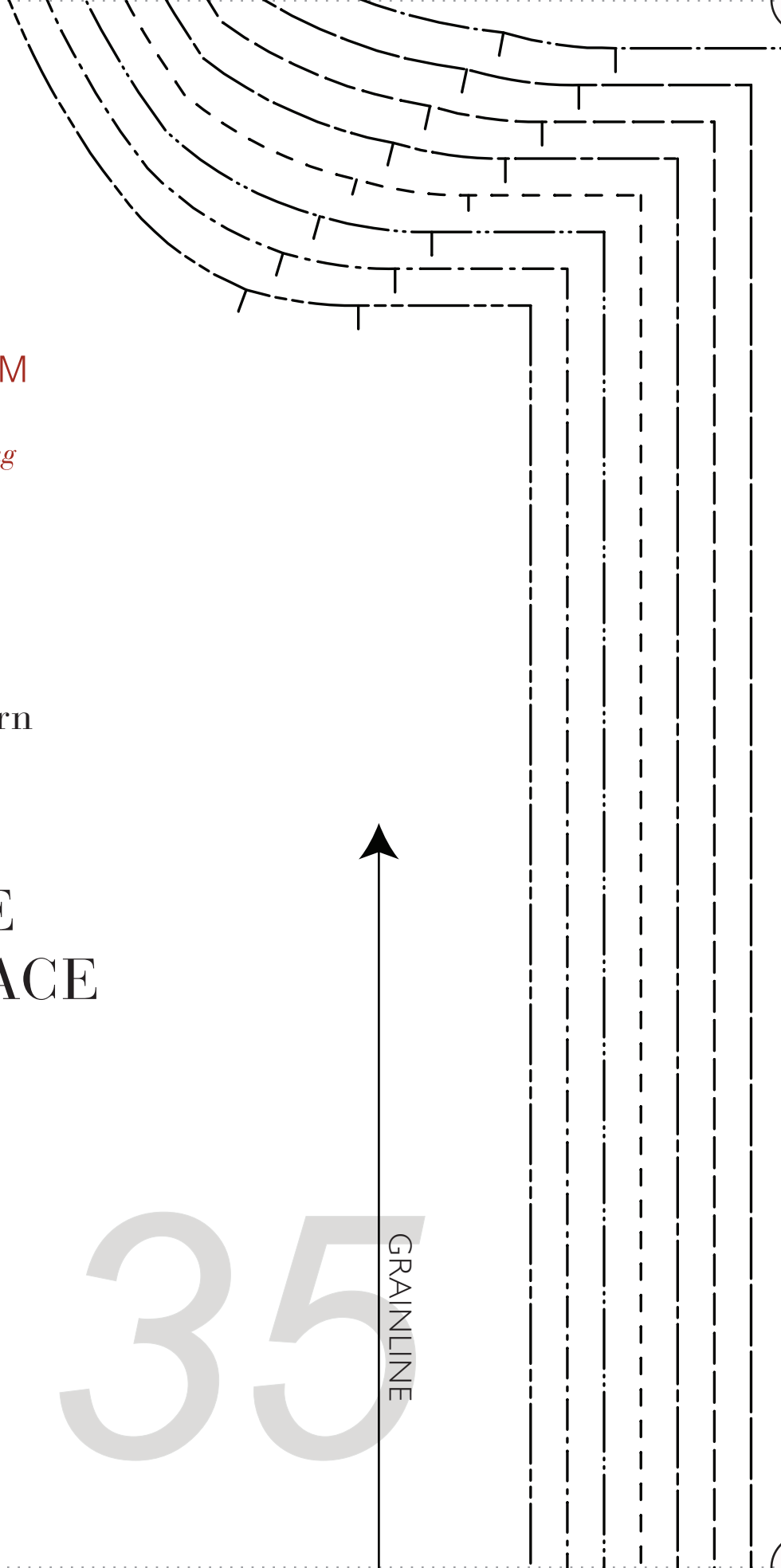
icsStoreSloanPattern

ONT BODICE
FACE TO FACE

- SIZE 0/2
- SIZE 4/6
- SIZE 8/10
- SIZE 12/14
- SIZE 16/18
- SIZE 20/22
- SIZE 24/26
- SIZE 28/30

35

GRAINLINE



F|S

FABRICS-STORE.COM

Our linen is nothing short of addicting

“Sloan”

#FabricStoreSloanPattern

POCKET
CUT 2 FACE TO FACE

36



GRAINLINE

37

SIZE 0/2

SIZE 4/6

SIZE 8/10

SIZE 12/14

SIZE 16/18

SIZE 20/22

SIZE 24/26

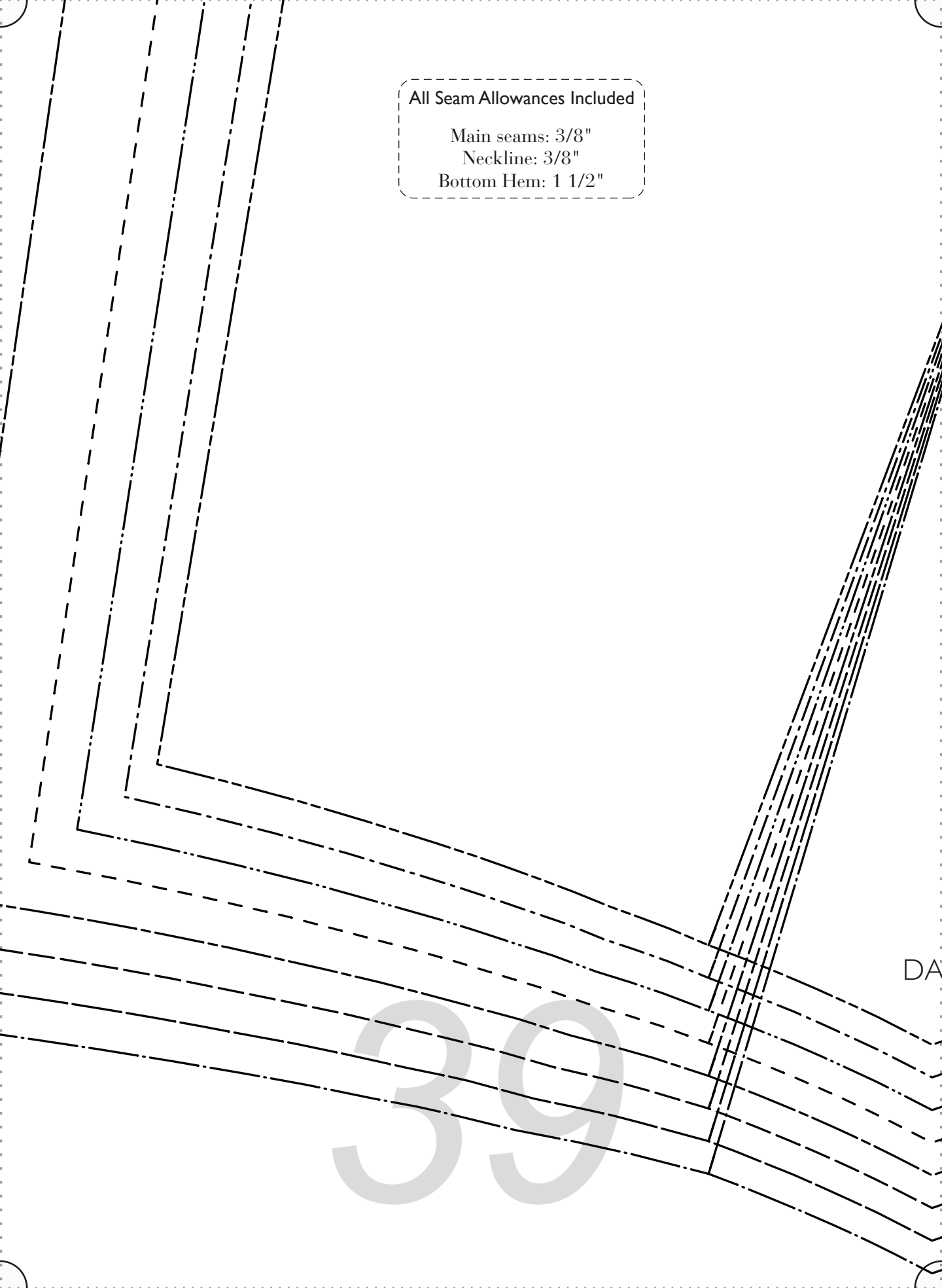
SIZE 28/30



38

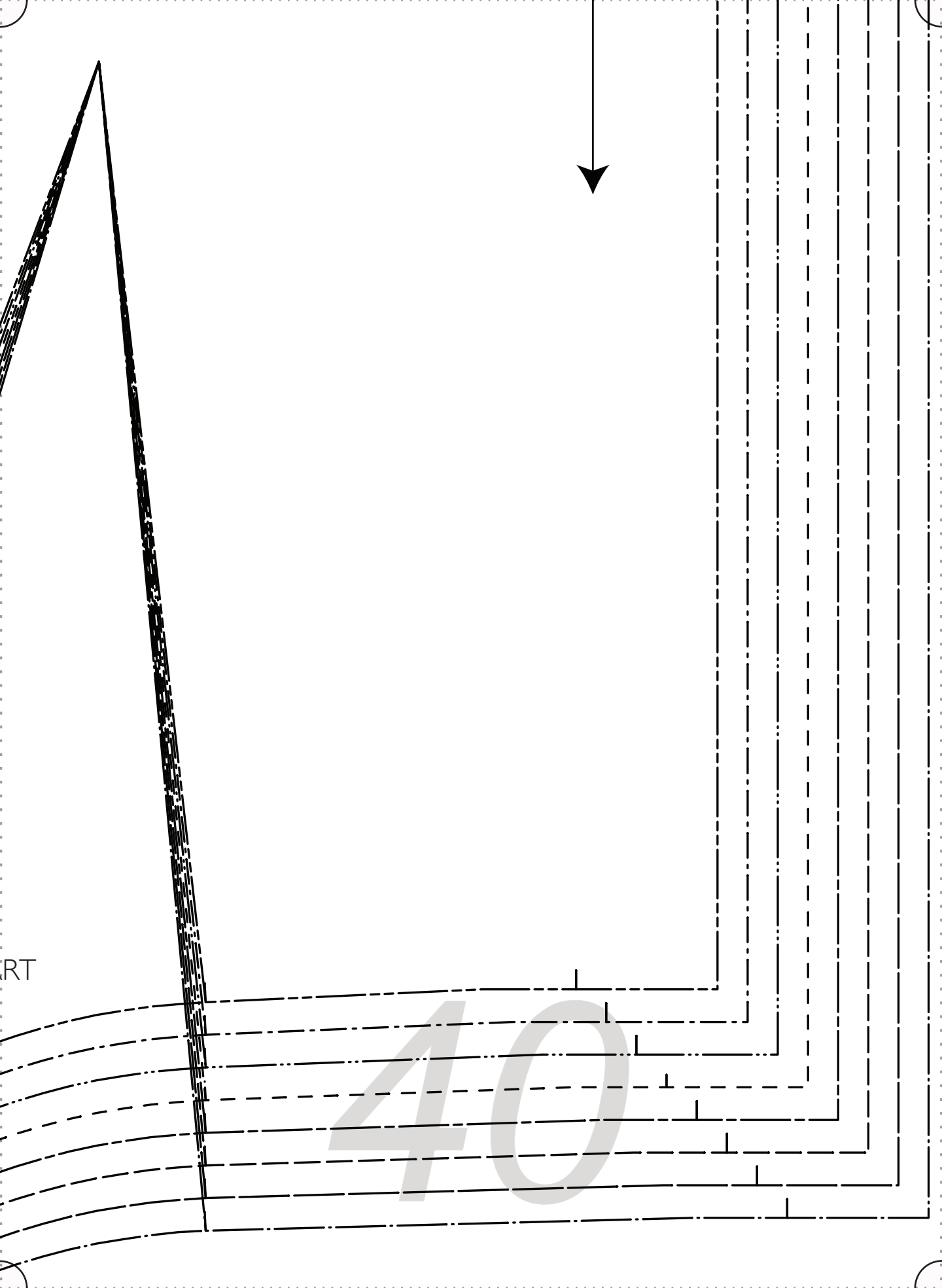
All Seam Allowances Included

Main seams: 3/8"
Neckline: 3/8"
Bottom Hem: 1 1/2"



DA

39



RT

40

Thank you

*We work hard on making our patterns beautiful
enough to meet your standards.*

*If you feel like sharing praise or helpful criticism, please
send us your comments to ask@fabrics-store.com*