

F|S

FABRICS-STORE.COM

*Our linen is nothing short of addicting*

# SARA PANT



## CASUAL TAILORING

*Everything about these pants is as effortlessly chic as it gets. They are relaxed and airy, the sort of pants you'd want to wear all summer long on all your adventures.*

Available in Ladies Sizes 0/2 to 28/30

866.620.2008 [ASK@FABRICS-STORE.COM](mailto:ASK@FABRICS-STORE.COM) [FABRICS-STORE.COM](http://FABRICS-STORE.COM)

---

# SARA PATTERN

---

*Our modern take on the classic pleated pants style. Designed to sit on your natural waist, It has two small pleats at the front, back darts for shaping, useful hip pockets, a zipper front fly and belt loops. The legs are slightly tapered and hit right above the ankle bone.*

*Sized for ladies 0/2 to 28/30*

*Simple step-by-step instructions on our blog  
The Thread at [Fabrics-Store.com](http://Fabrics-Store.com)*

---

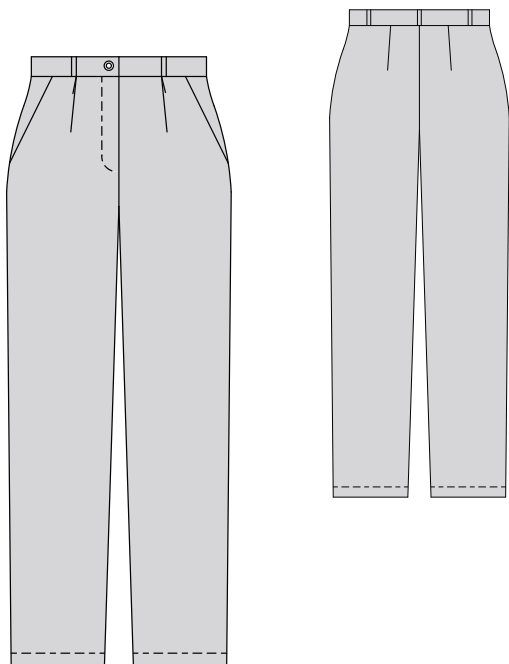
MASHA IS WEARING 4C22 REED SOFTENED - 100% LINEN - HEAVY (7.1 OZ/YD<sup>2</sup>)



Our lovely model Masha is wearing Size 4/6.

# PATTERN DETAILS

#FABRICSSTORESARAPATTERN



## SARA PATTERN

Ladies Duo Sizes: 0/2 to 28/30

- Zipper fly front.
- Front slant pockets.
- Fitted waistband with belt loops.
- Front pleats, back darts.
- Slightly tapered legs.

## SEWING INSTRUCTIONS

This pattern is featured on our blog “The Thread” at [Fabrics-Store.com](http://Fabrics-Store.com). There you will find step-by-step photo instructions and can ask questions, post comments, or share your progress. Simply visit: [blog.fabrics-store.com](http://blog.fabrics-store.com) and enter “Sara Pattern” in the search box.

## SIZING & YARDAGE

Ladies Size Guide Based on Body Measurements in Inches

Size	0/2	4/6	8/10	12/14	16/18	20/22	24/26	28/30
Bust	33-34	35-36	37-38	39-40	42-44	46-48	50-52	54-56
Waist	25-26	27-28	29-30	31-32	34-36	38-40	42-44	46-48
Hip	35-36	37-38	39-40	41-42	44-46	48-50	52-54	56-58

Finished Garment Measurements - Approximate in Inches

Size	0/2	4/6	8/10	12/14	16/18	20/22	24/26	28/30
Waist	26.5	28.5	31	33.5	37.5	41.5	46	50.5
Hips	37	39	41.5	44	48	52	56.5	61

Estimated Yardage - 54" Width Linen

Size	0/2	4/6	8/10	12/14	16/18	20/22	24/26	28/30
Yardage*	2				2.5			

\*Allow up to 10% extra fabric for shrinkage.

ALL SEAM ALLOWANCES ARE INCLUDED AND NOTED ON THE PATTERN AND IN THE TUTORIAL.

## “Sara” Sewing Pattern

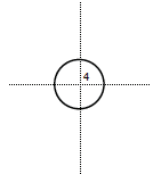
For instructions visit: [blog.fabrics-store.com](http://blog.fabrics-store.com) and enter “Sara Pattern” in the search box.

**2 Inch  
Square to  
Check Print  
Accuracy**

### PRINT ONLY THIS PAGE FIRST TO CHECK SCALE

**IMPORTANT! PRINT AT ACTUAL SIZE, 100%, OR NO SCALING**

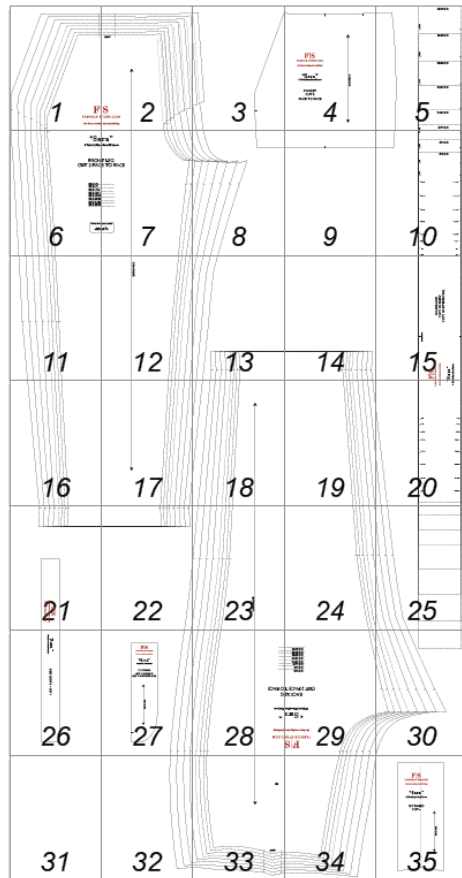
*Formatted for paper sizes A4 and Letter.*



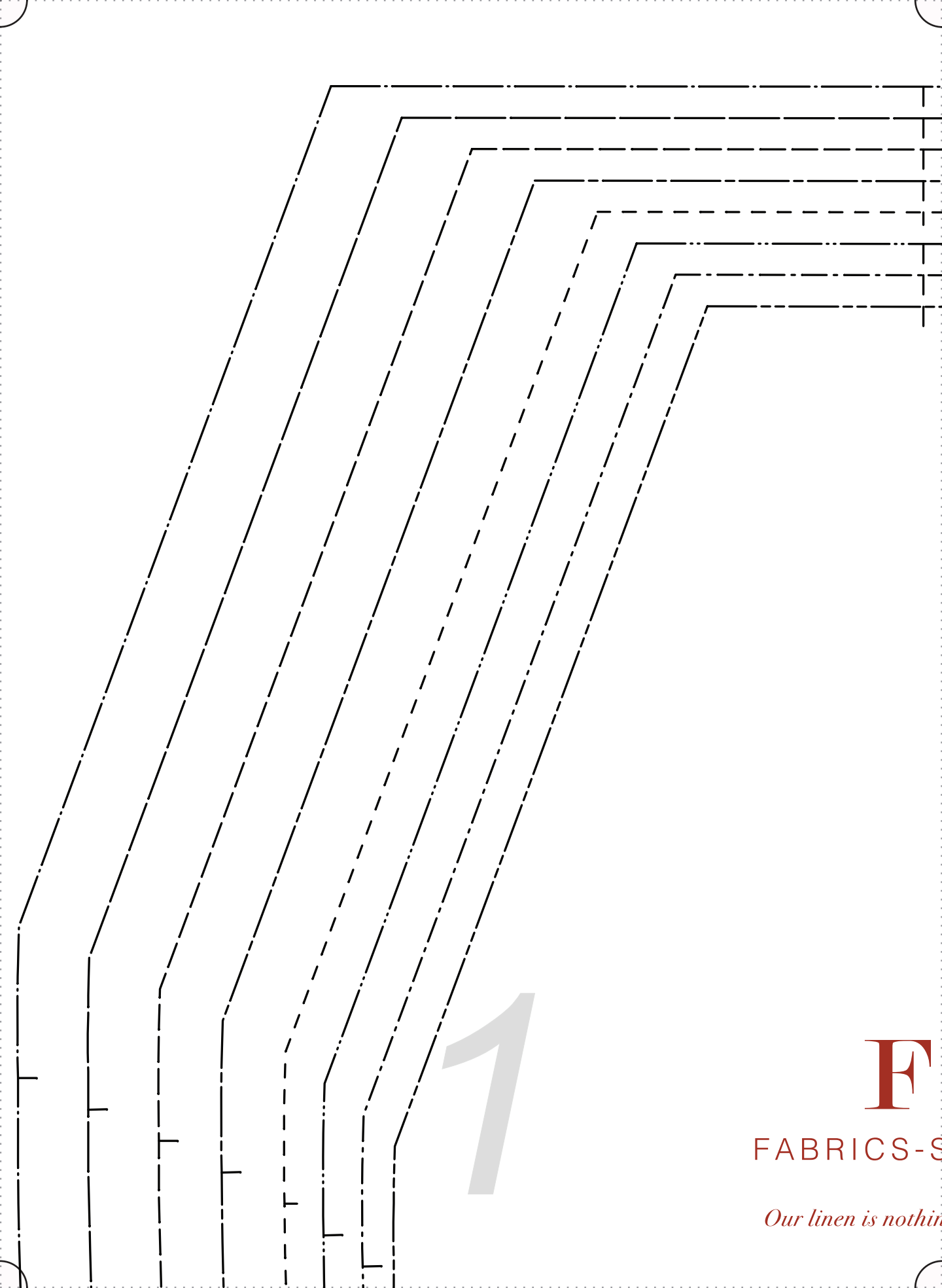
Simply overlap the page margins and align the markings in each corner to complete the circle and tape in place.

#### Layered PDF:

This pattern has embedded layers so you can print all sizes or a single size. See your .pdf viewers 'Layers' menu.



For instructions visit: [blog.fabrics-store.com](http://blog.fabrics-store.com) and enter “Sara Pattern” in the search box.



1

F

FABRICS-S

*Our linen is nothing*

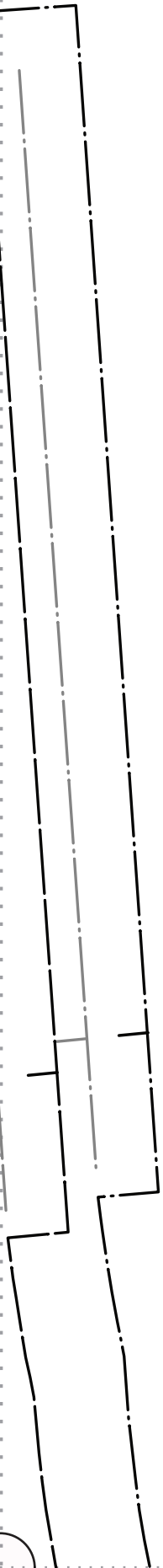
PLEAT



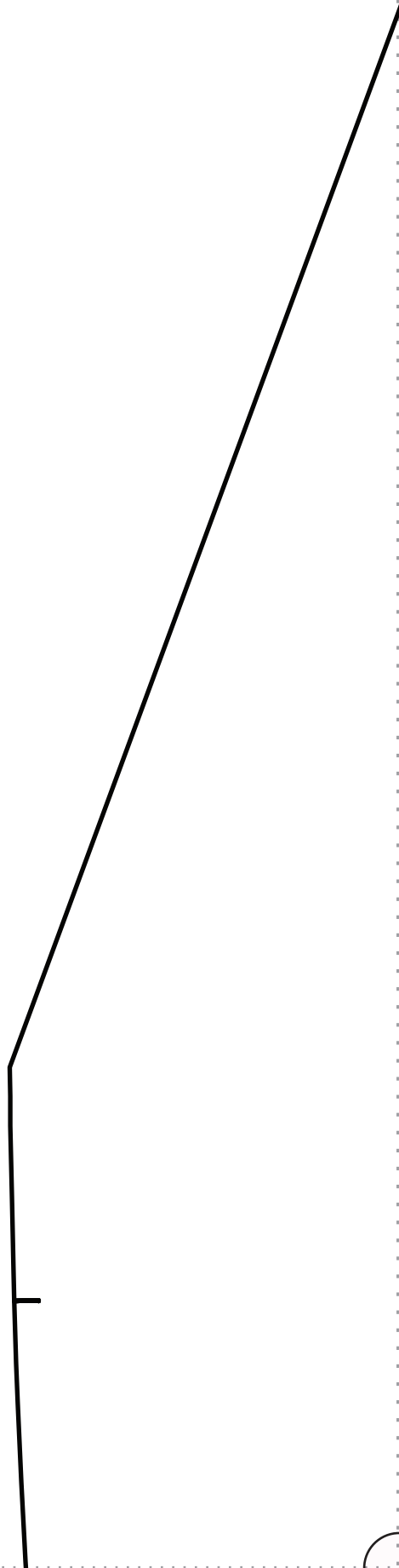
2

S  
STORE.COM

*g short of addicting*



3





F|S

FABRICS-STORE.COM

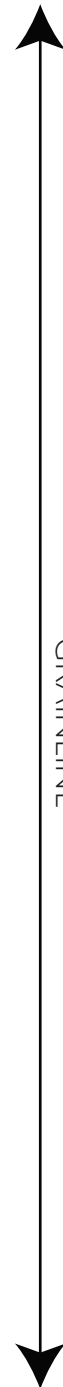
*Our linen is nothing short of addicting*

“Sara”

#FabricStoreSaraPattern

POCKET  
CUT 2  
FACE TO FACE

4



GRAINLINE

SIZE 28/30

▽ 28/30

SIZE 24/26

▽ 24/26

SIZE 20/22

▽ 20/22

SIZE 16/18

▽ 16/18

SIZE 12/14

▽ 14

SIZE 8/10

5

“Sa

#FabricsStor

FRONT  
CUT 2 FAC

SIZE 0/2

SIZE 4/6

SIZE 8/10

SIZE 12/14

SIZE 16/18

SIZE 20/22

SIZE 24/26

SIZE 28/30

All Seam Allow

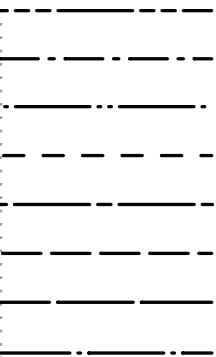
Main s  
Bottom

6

ra”

reSaraPattern

IT LEG  
CE TO FACE

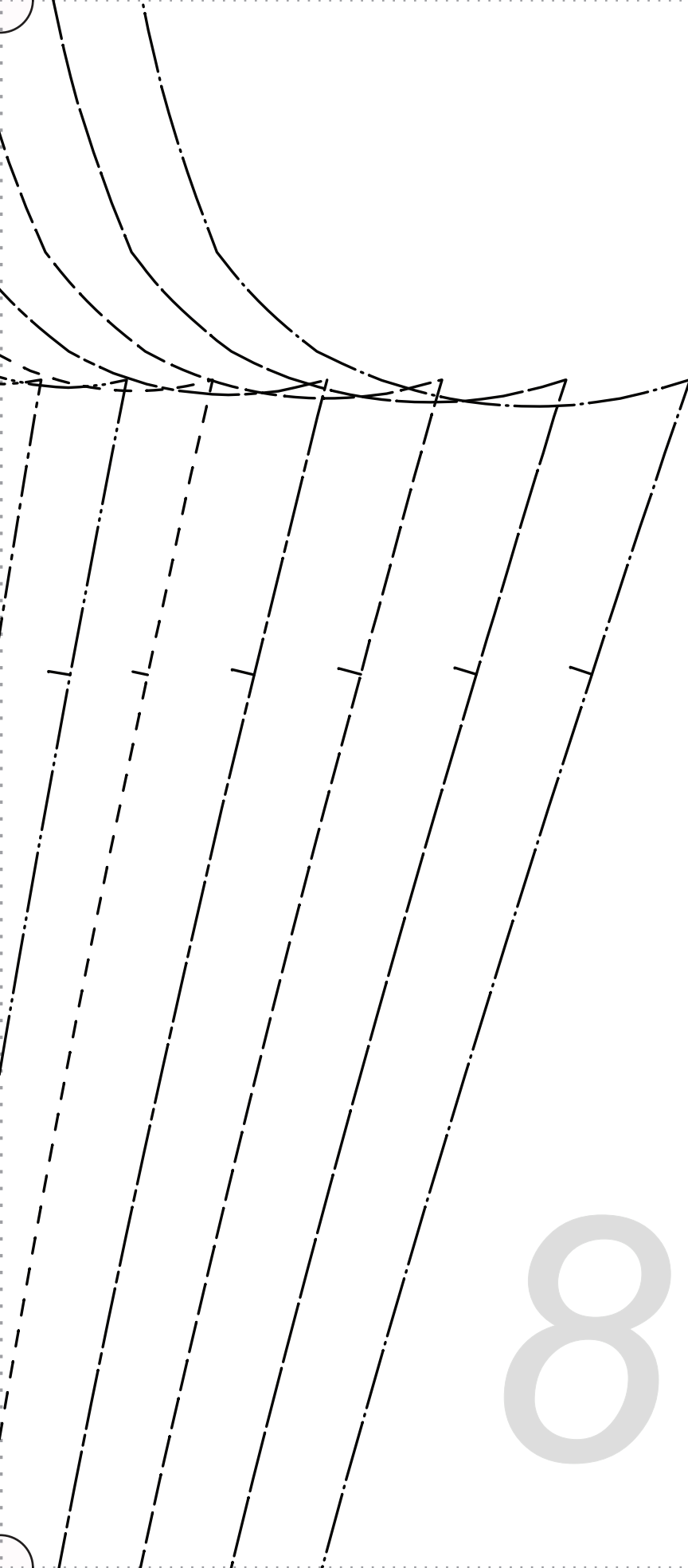
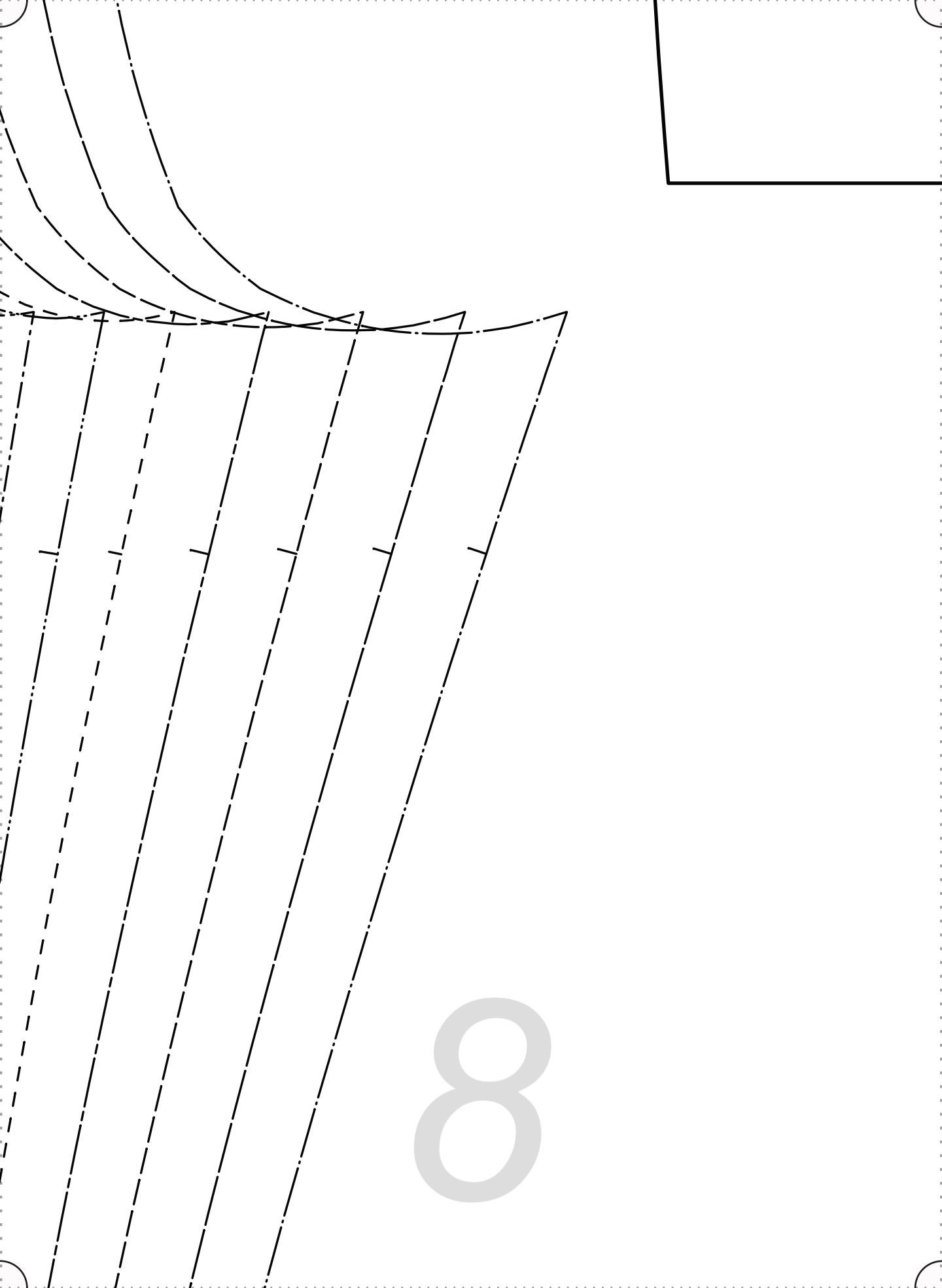


Swances Included

Seams:  $\frac{3}{8}$ "  
Hem:  $1 \frac{1}{2}$ "

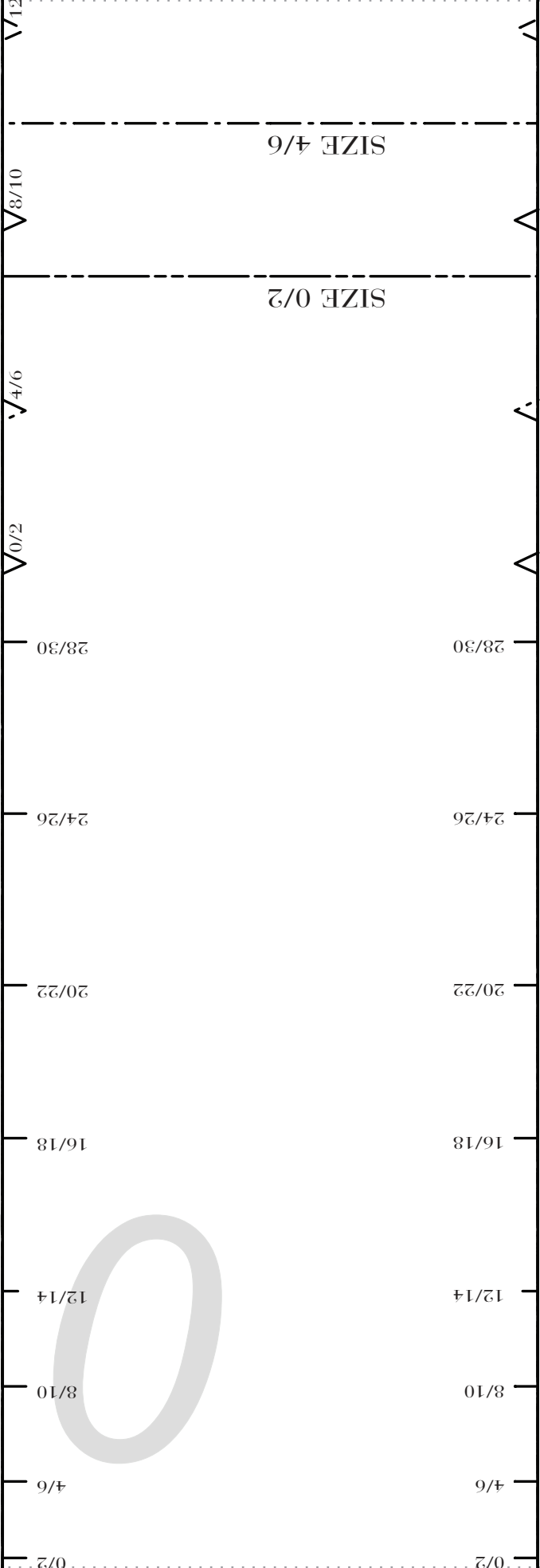
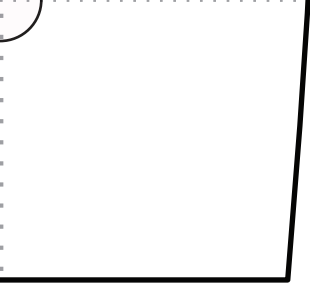
7





8

9



SIZE 4/6

SIZE 0/2

8/10

4/6

0/2

28/30

24/26

20/22

16/18

12/14

8/10

4/6

0/2

28/30

24/26

20/22

16/18

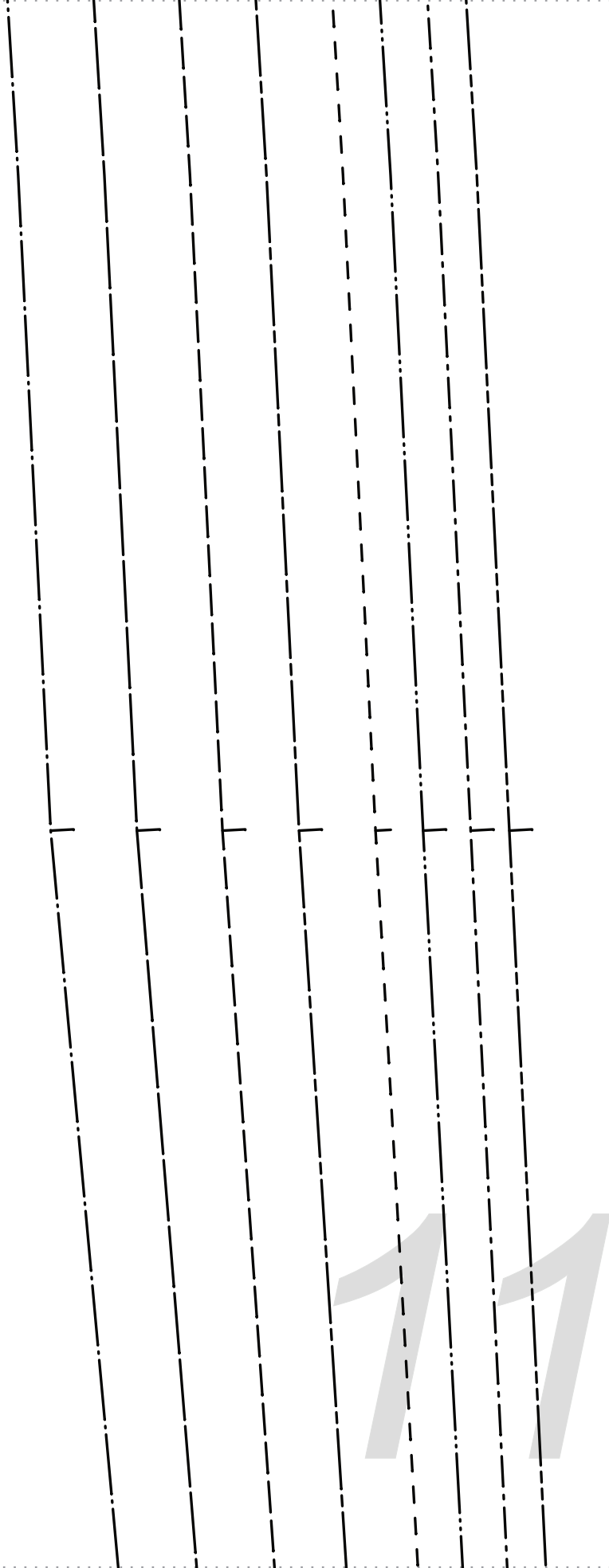
12/14

8/10

4/6

0/2

10

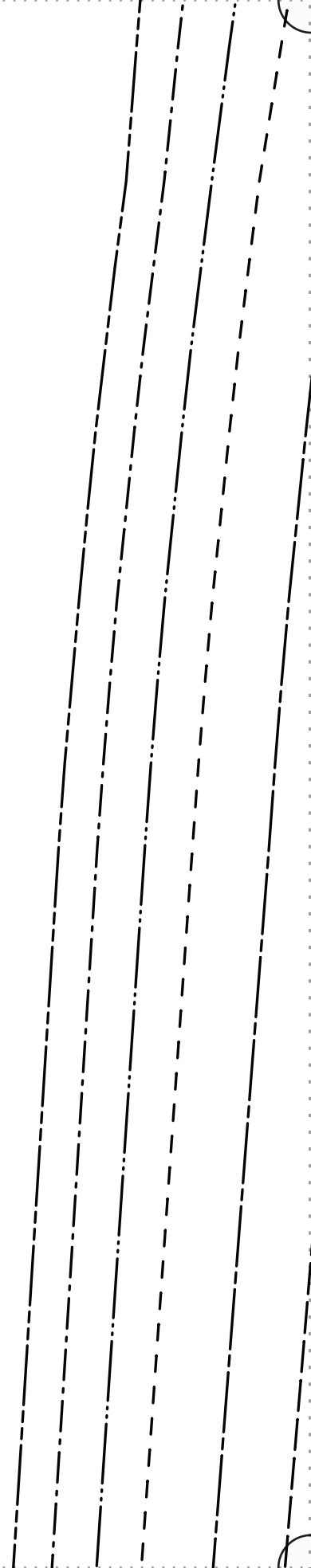


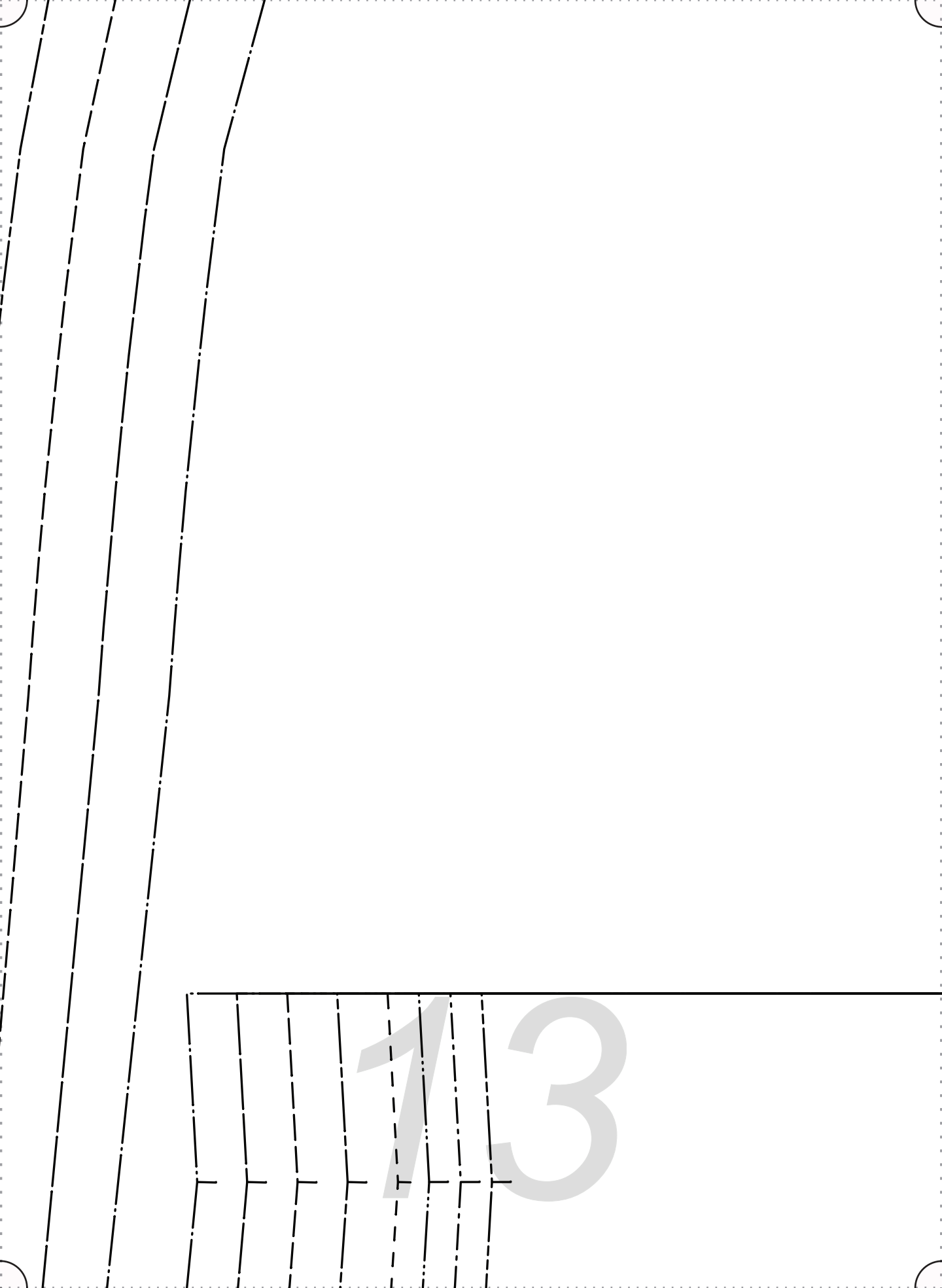
1 1



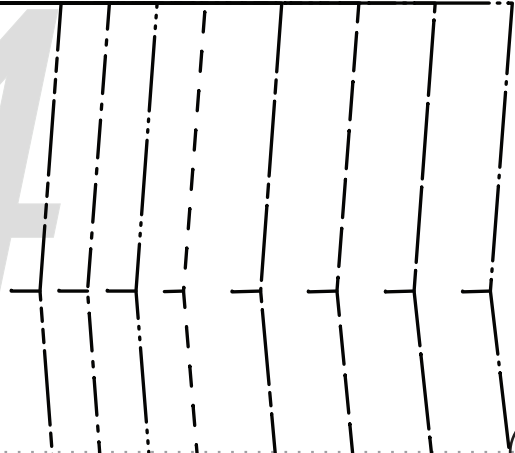
GRAINLINE

12





14



1

CENTER BACK

CS

**F|S**  
ICS-STORE.COM

*is nothing short of addicting*

WAISTBAND  
CUT 1 IN FABRIC  
CUT 1 IN INTERFACING

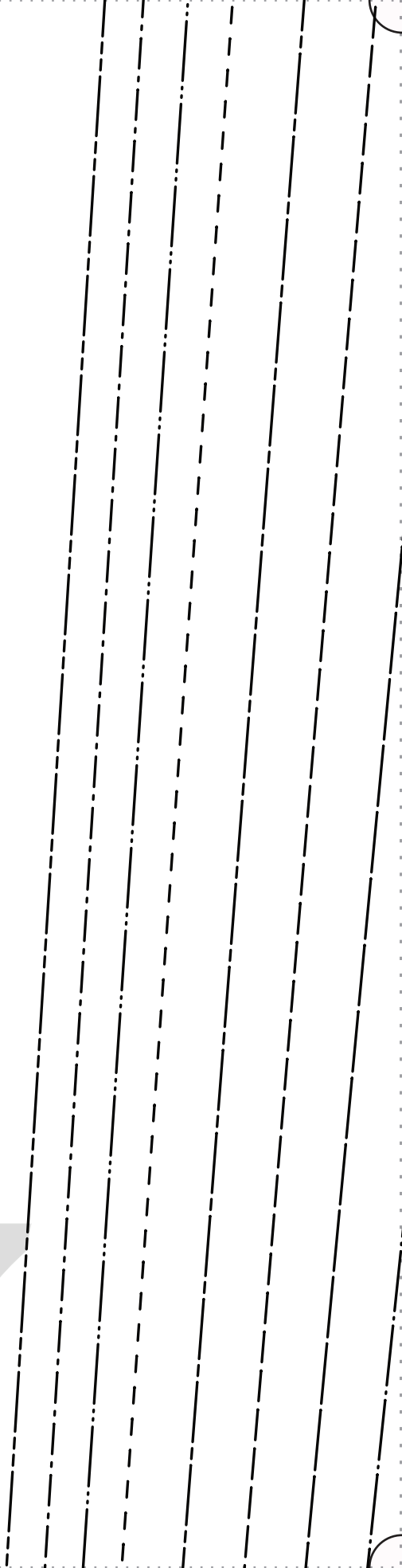
**Sara™**

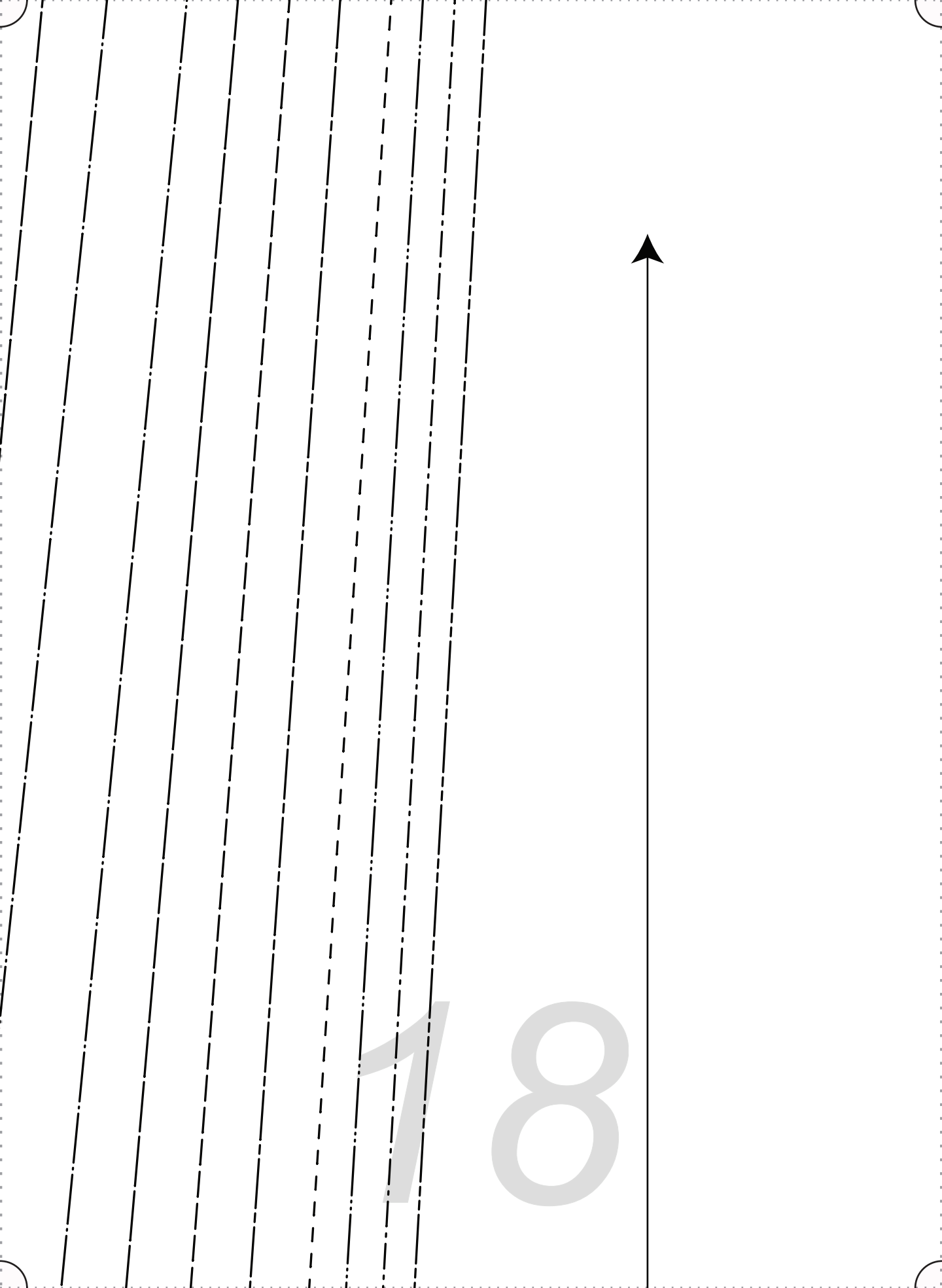
icsStoreSaraPattern

16



17





8



19



FABR

*Our lines*

66

#Fabr

0/2

0/2

4/6

4/6

8/10

8/10

12/14

12/14

16/18

16/18

20/22

20/22

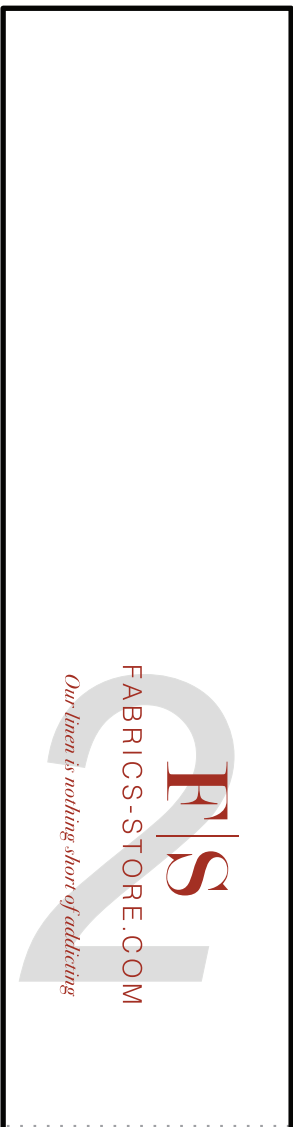
24/26

24/26

28/30

28/30

20

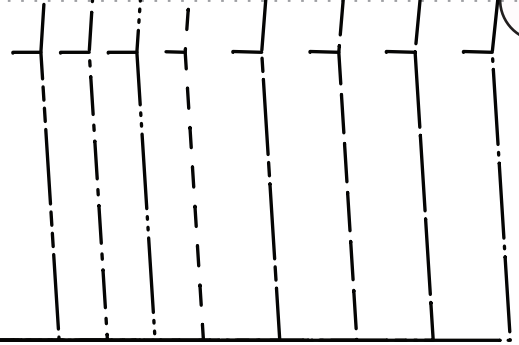


*Our linen is nothing short of addicting*

FABRICS-STORE.COM

F|S

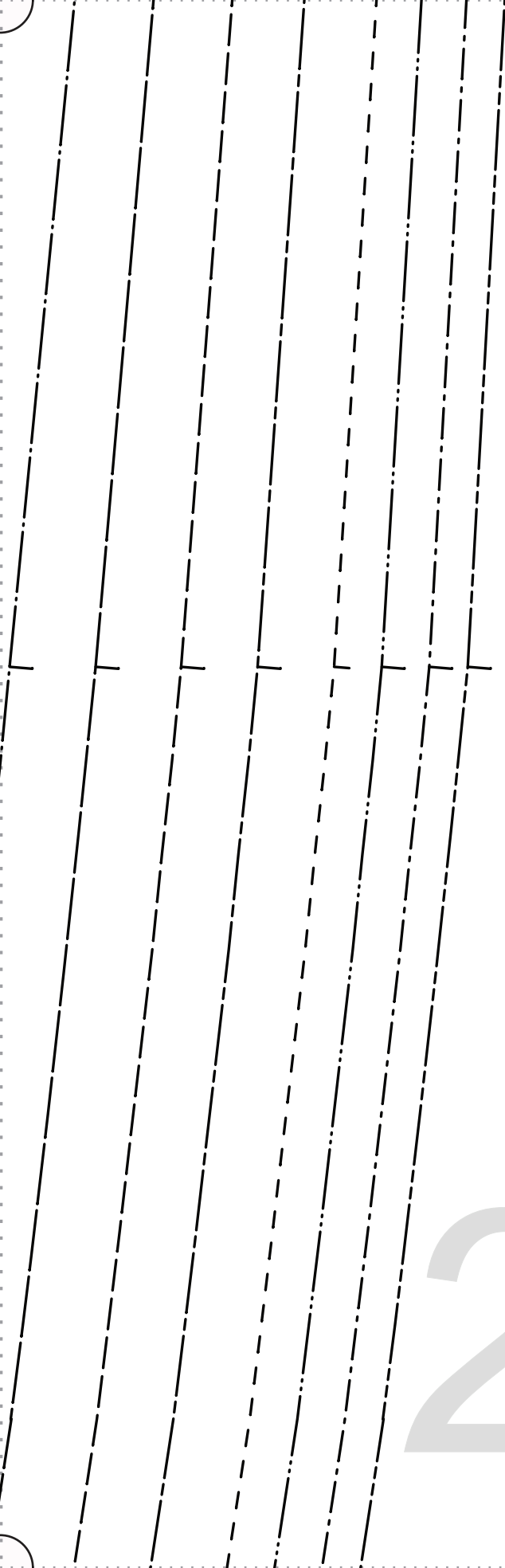




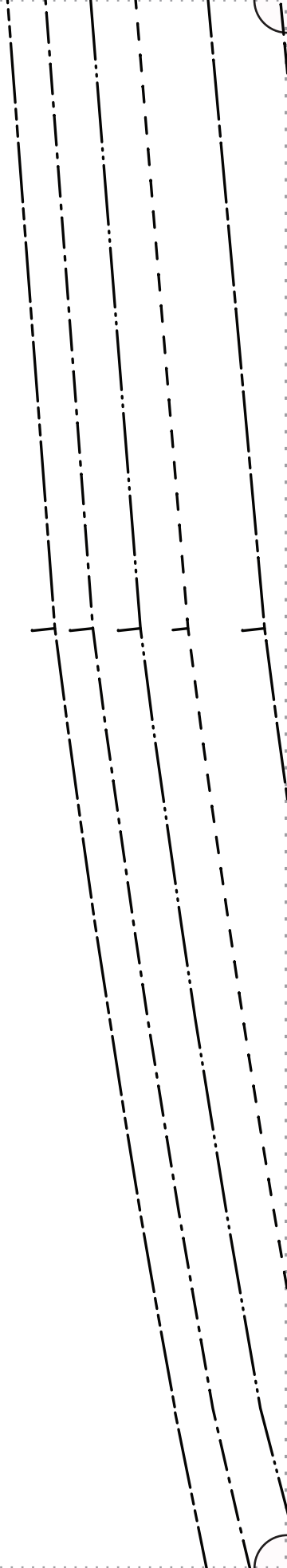
22

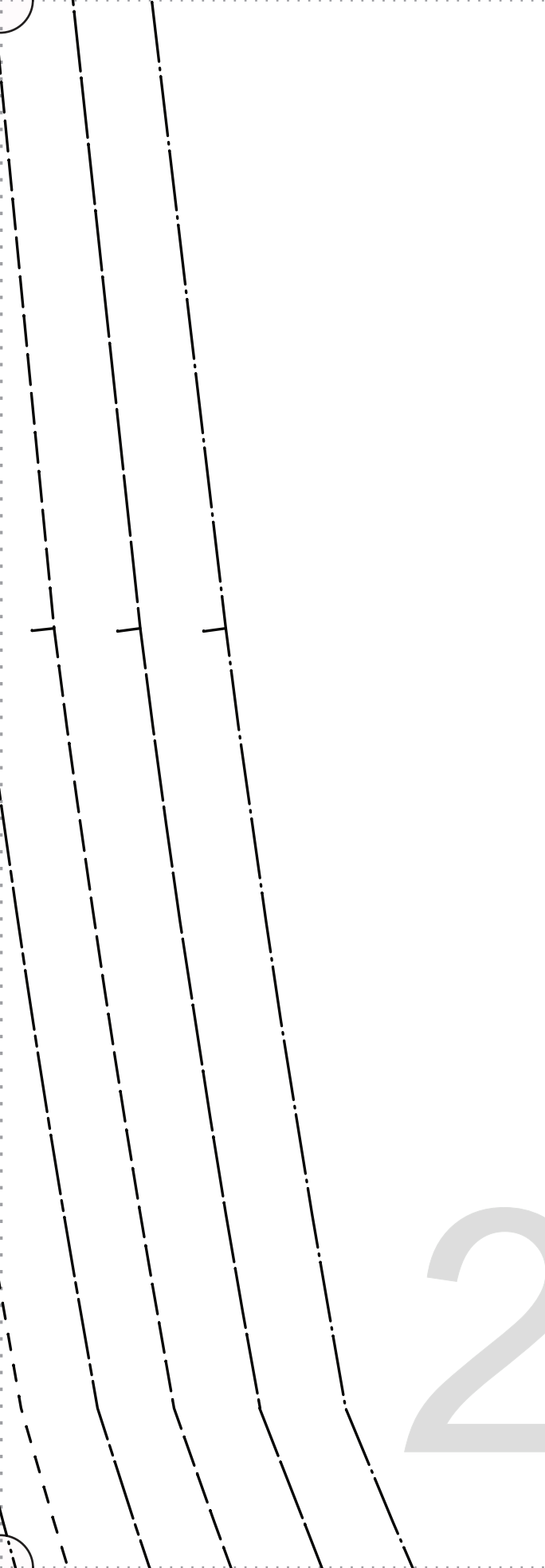
23

GRAINLINE



24






25

“Sara”

#FabricStoreSaraPattern

BELT LOOPS – CUT 1

26

**F|S**

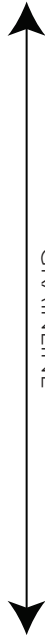
FABRICS-STORE.COM

*Our linen is nothing short of addictive*

“Sara”

#FabricsStoreSaraPattern

FLY FACING  
CUT 1 IN FABRIC  
CUT 1 IN INTERFACING

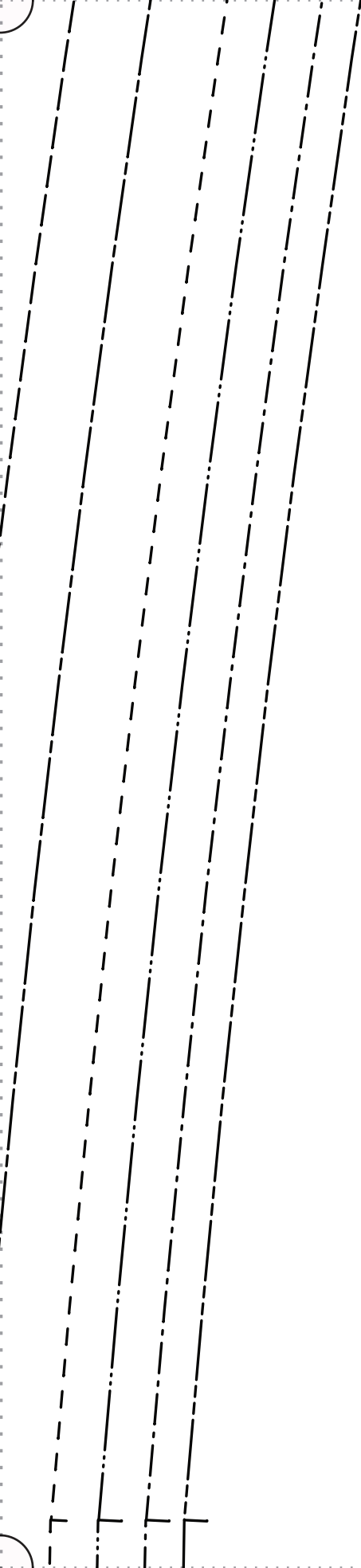


GRAINLINE

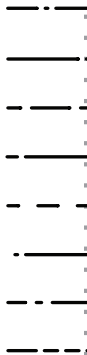
27







28



F|S

FABRICS-STOR

*Our linen is nothing short of*

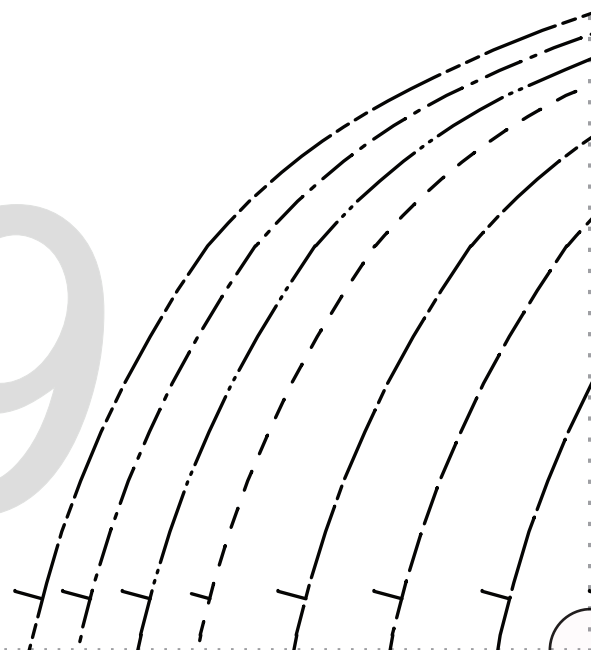
“Sara

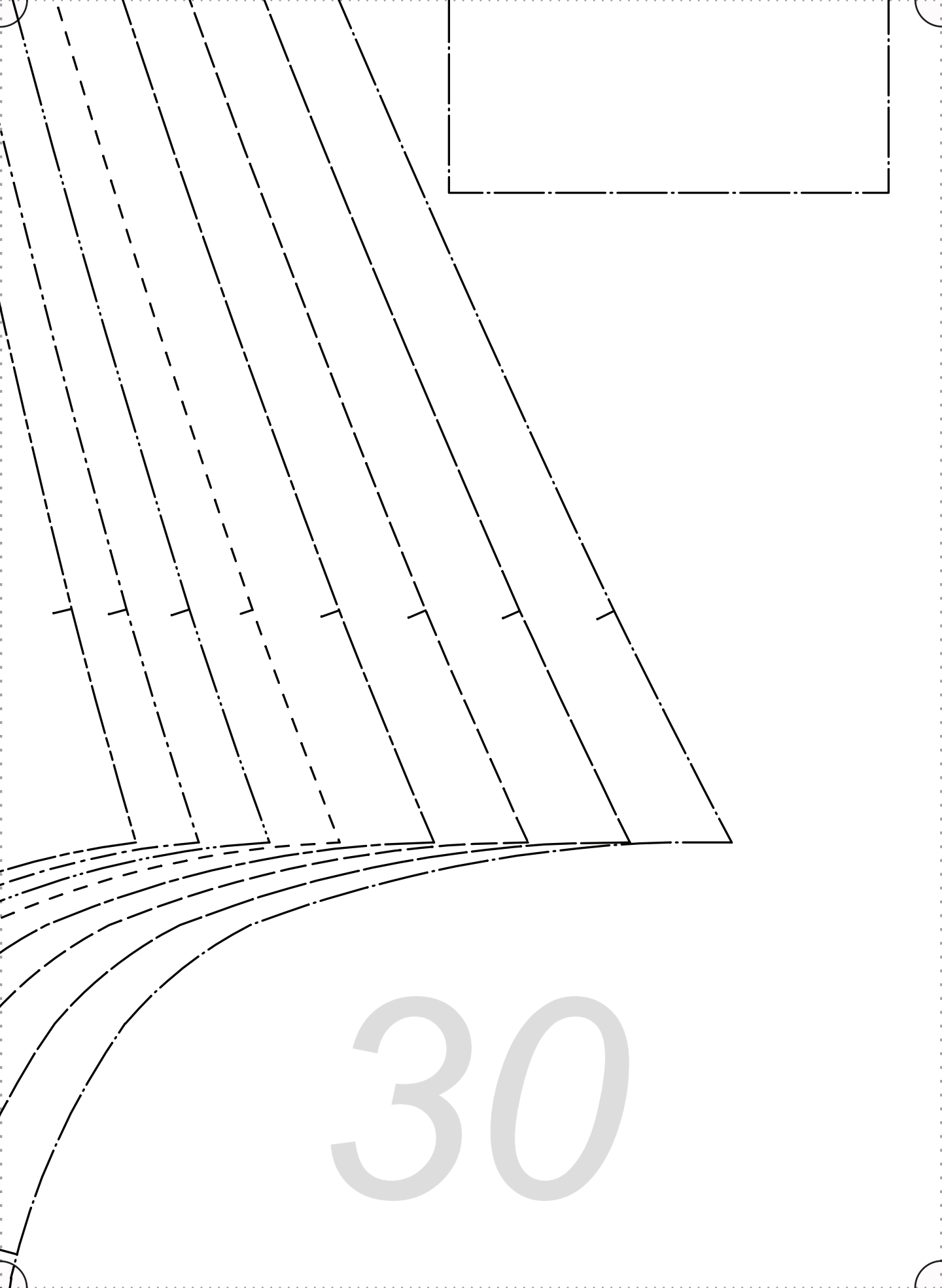
#FabricStoresara

BACK LE  
CUT 2 FACE T

- SIZE 0/2
- SIZE 4/6
- SIZE 8/10
- SIZE 12/14
- SIZE 16/18
- SIZE 20/22
- SIZE 24/26
- SIZE 28/30

29



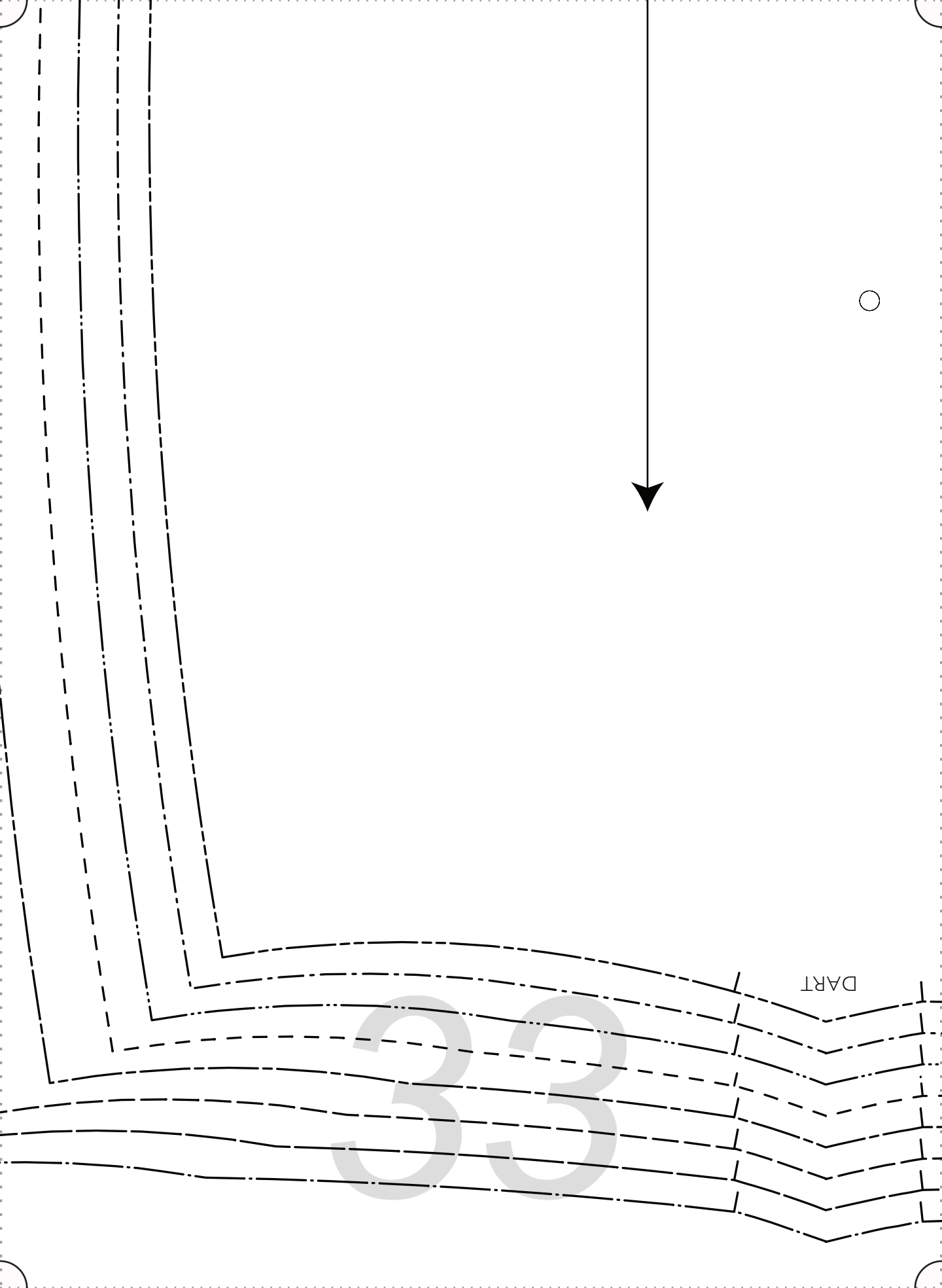


30

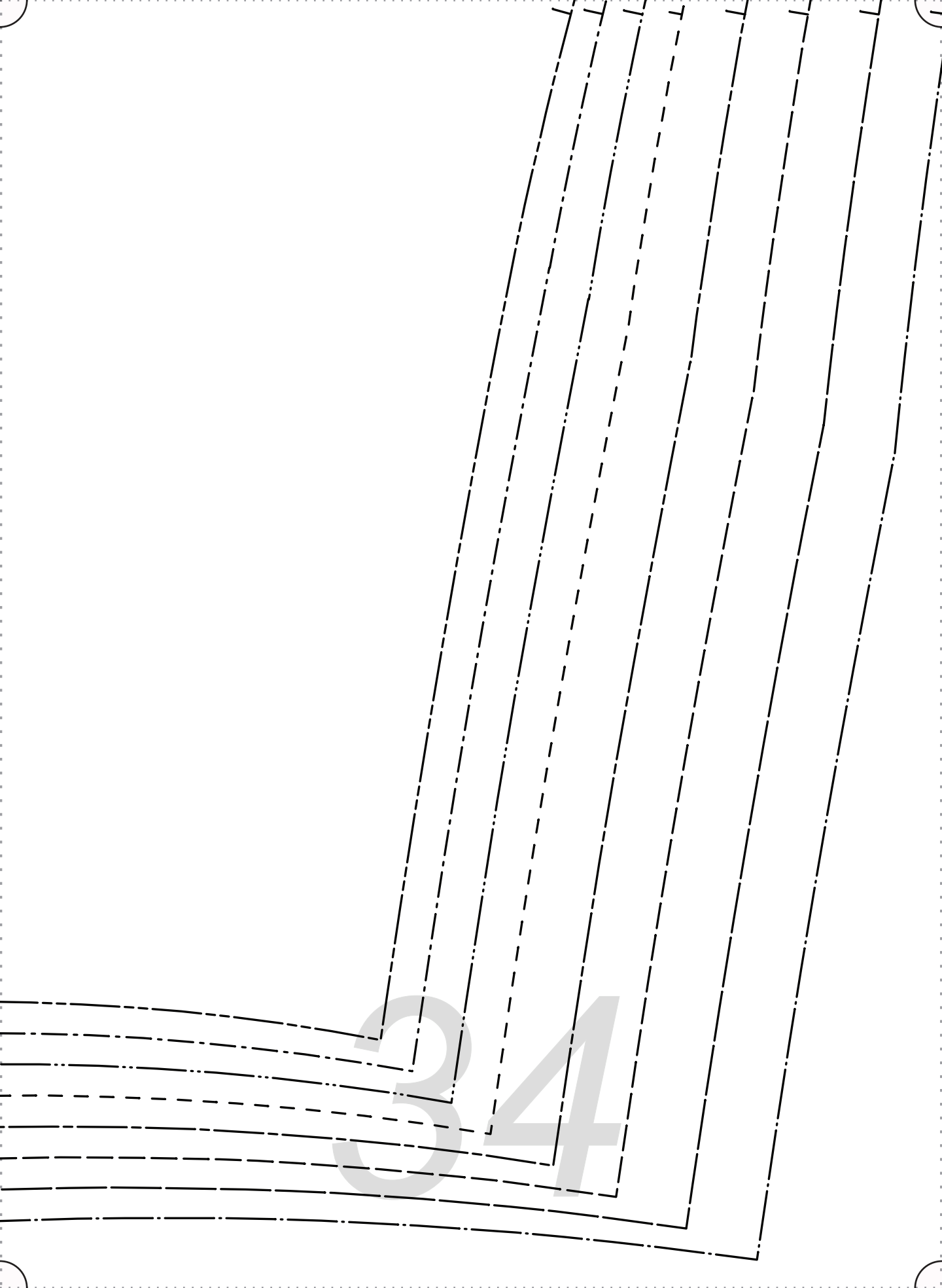
31

32





DART



34

F|S

FABRICS-STORE.COM

*Our linen is nothing short of addicting*

“Sara”

#FabricStoreSaraPattern

FLY SHIELD  
CUT 1



35



---

# *Thank you*

---

*We work hard on making our patterns beautiful  
enough to meet your standards.*

*If you feel like sharing praise or helpful criticism, please  
send us your comments to [ask@fabrics-store.com](mailto:ask@fabrics-store.com)*