

F|S

FABRICS-STORE.COM

*Our linen is nothing short of addicting*

# LUNA DRESS



## QUINTESSENTIAL SUNDRESS

*With its iconic look, it's the kind of dress you'd want to wear on those hot summer days when you feel like wearing as little as possible.*

Available in Ladies Sizes 0/2 to 28/30

866.620.2008 [ASK@FABRICS-STORE.COM](mailto:ASK@FABRICS-STORE.COM) [FABRICS-STORE.COM](http://FABRICS-STORE.COM)

---

MASHA WEARS IL019 BLEACHED FS SIGNATURE FINISH - 100% LINEN - (5.3 OZ/YD<sup>2</sup>)



Our lovely model Masha is wearing Size 4/6.

---

# LUNA PATTERN

---

*Luna is a classic camisole sundress thin spaghetti straps, semi-fitted lined bodice, side zipper and a gathered skirt. It also features two handy patch pockets that give it a relaxed feel.*

*Sized for ladies 0/2 to 28/30*

*Simple step-by-step instructions on our blog  
The Thread @ [Fabrics-Store.com](http://Fabrics-Store.com)*

# PATTERN DETAILS

#FABRICSSTORELUNAPATTERN

## LUNA PATTERN

Ladies Duo Sizes: 0/2 to 28/30



- Fitted bodice.
- Side bust darts.
- Side zipper.
- Gathered skirt.
- Side patch pockets.

## SEWING INSTRUCTIONS

This pattern is featured on our blog “The Thread” at [Fabrics-Store.com](http://Fabrics-Store.com). There you will find step-by-step photo instructions and can ask questions, post comments, or share your progress. Simply visit: [blog.fabrics-store.com](http://blog.fabrics-store.com) and enter “Luna Pattern” in the search box.

## SIZING & YARDAGE

Ladies Size Guide Based on Body Measurements in Inches

	XS	S	M	L	XL	2X	3X	4X
Size	0/2	4/6	8/10	12/14	16/18	20/22	24/26	28/30
Bust	33-34	35-36	37-38	39-40	42-44	46-48	50-52	54-56
Waist	25-26	27-28	29-30	31-32	34-36	38-40	42-44	46-48
Hip	35-36	37-38	39-40	41-42	44-46	48-50	52-54	56-58

Finished Garment Measurements - Approximate in Inches

	0/2	4/6	8/10	12/14	16/18	20/22	24/26	28/30
Size	0/2	4/6	8/10	12/14	16/18	20/22	24/26	28/30
Bust	34.25	36.25	38.75	41.25	45.25	49.25	53.75	58.25
Waist	28	30	32.5	35	39	43	47.5	52
Hip	52	54	56.5	59	63	67	71.5	76

Estimated Yardage\* - 54" Width Linen

Size	0/2	4/6	8/10	12/14	16/18	20/22	24/26	28/30
Yardage	2 Yards		2 1/2 Yards			3 Yards		

\*Allow up to 10% extra fabric for shrinkage.

ALL SEAM ALLOWANCES ARE INCLUDED AND NOTED ON THE PATTERN AND IN THE TUTORIAL.

## “Luna” Sewing Pattern

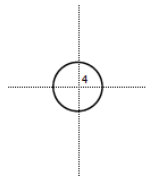
For instructions visit: [blog.fabrics-store.com](http://blog.fabrics-store.com) and enter “Luna Pattern” in the search box.

**2 Inch  
Square to  
Check Print  
Accuracy**

### PRINT ONLY THIS PAGE FIRST TO CHECK SCALE

IMPORTANT! PRINT AT ACTUAL SIZE, 100%, OR NO SCALING.

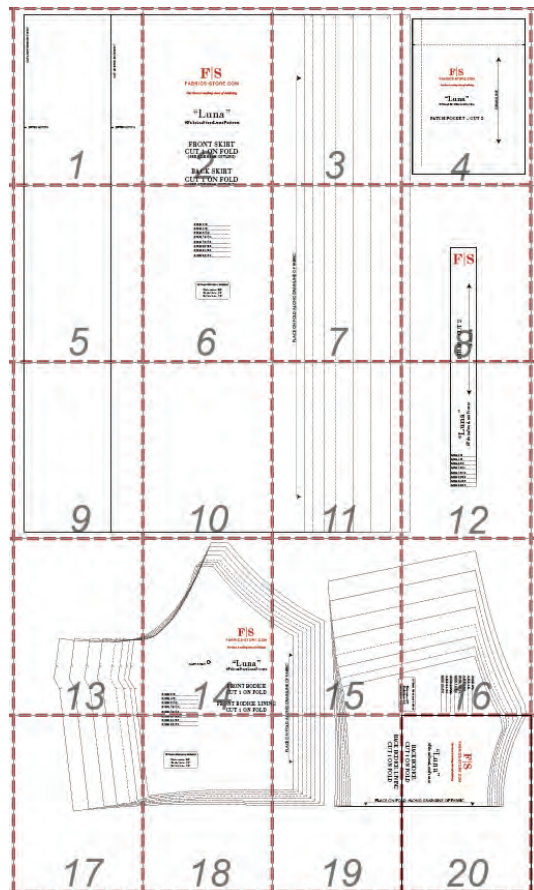
*Formatted for paper sizes A4 and Letter.*



Simply overlap the page margins and align the markings in each corner to complete the circle and tape in place.

#### Layered PDF:

This pattern has embedded layers so you can print all sizes or a single size. See your .pdf viewers 'Layers' menu.



For instructions visit: [blog.fabrics-store.com](http://blog.fabrics-store.com) and enter “Luna Pattern” in the search box.

CUT LINE FOR FRONT SKIRT

ZIPPER NOTCH

1

CUT LINE FOR BACK SKIRT

ZIPPER NOTCH

F|S

FABRICS-STORE.COM

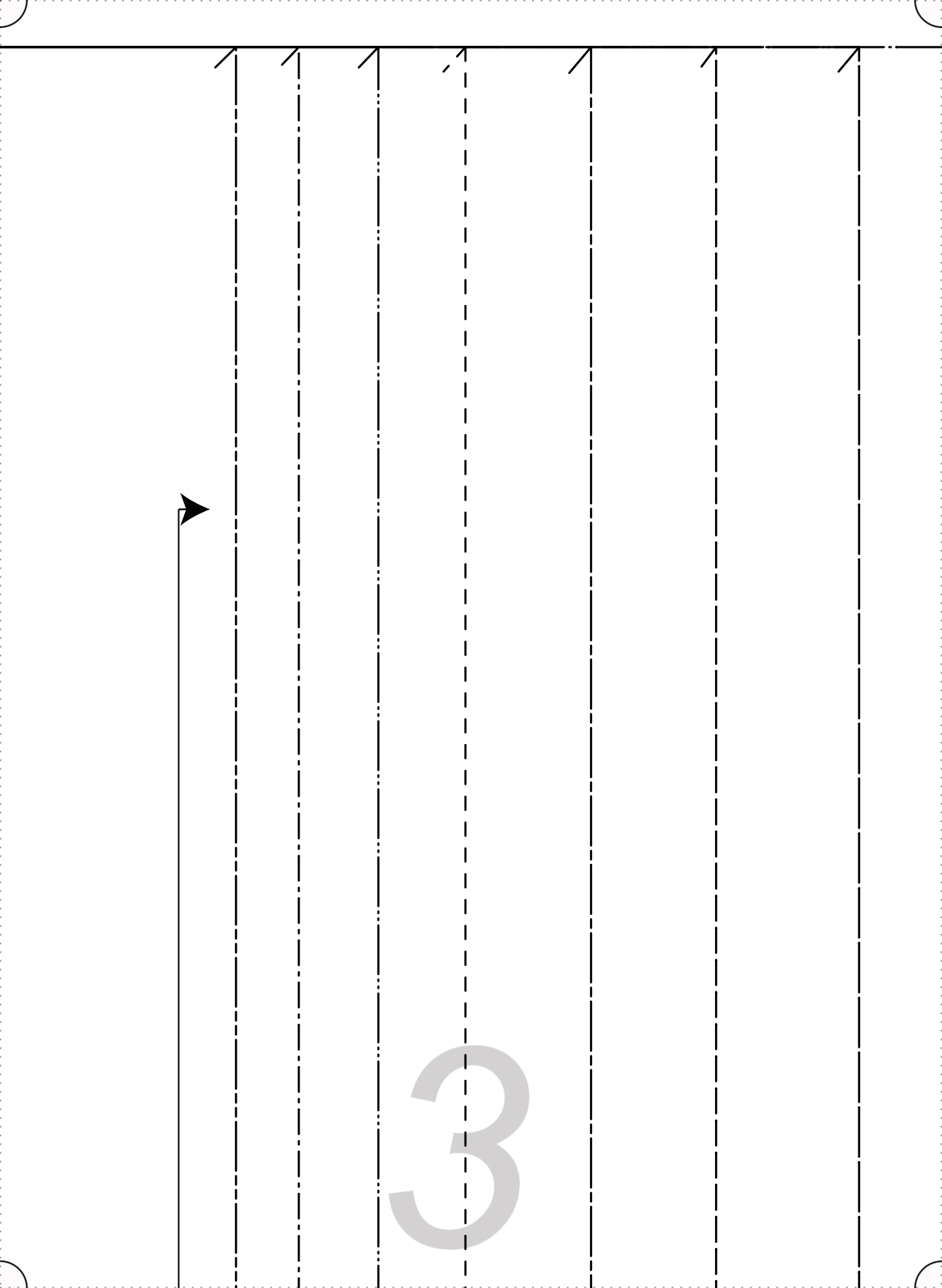
*Our linen is nothing short of addicting*

“Luna”

#FabricStoreLunaPattern

FRONT SKIRT  
CUT 1 ON FOLD  
(SEE SIDE SEAM CUTLINE)

BACK SKIRT  
CUT 1 ON FOLD  
(SEE SIDE SEAM CUTLINE)



3



F|S

FABRICS-STORE.COM

*Our linen is nothing short of addicting*

“Luna”

#FabricStoreLunaPattern

PATCH POCKET – CUT 2

GRAINLINE

4

5

SIZE 0/2 .....

SIZE 4/6 .....

SIZE 8/10 .....

SIZE 12/14 .....

SIZE 16/18 .....

SIZE 20/22 .....

SIZE 24/26 .....

SIZE 28/30 .....

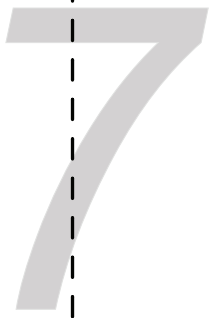
All Seam Allowances Included

Main seams: 3/8"

Pocket hem: 1.5"

Bottom hem: 1.5"

PLACE ON FOLD ALONG GRAINLINE OF FABRIC



STRAP - CUT 2

GRAINLINE



F / S

9

10



1 1



# “Luna”

#FabricsStoreLunaPattern



SIZE 0/2

SIZE 4/6

SIZE 8/10

SIZE 12/14

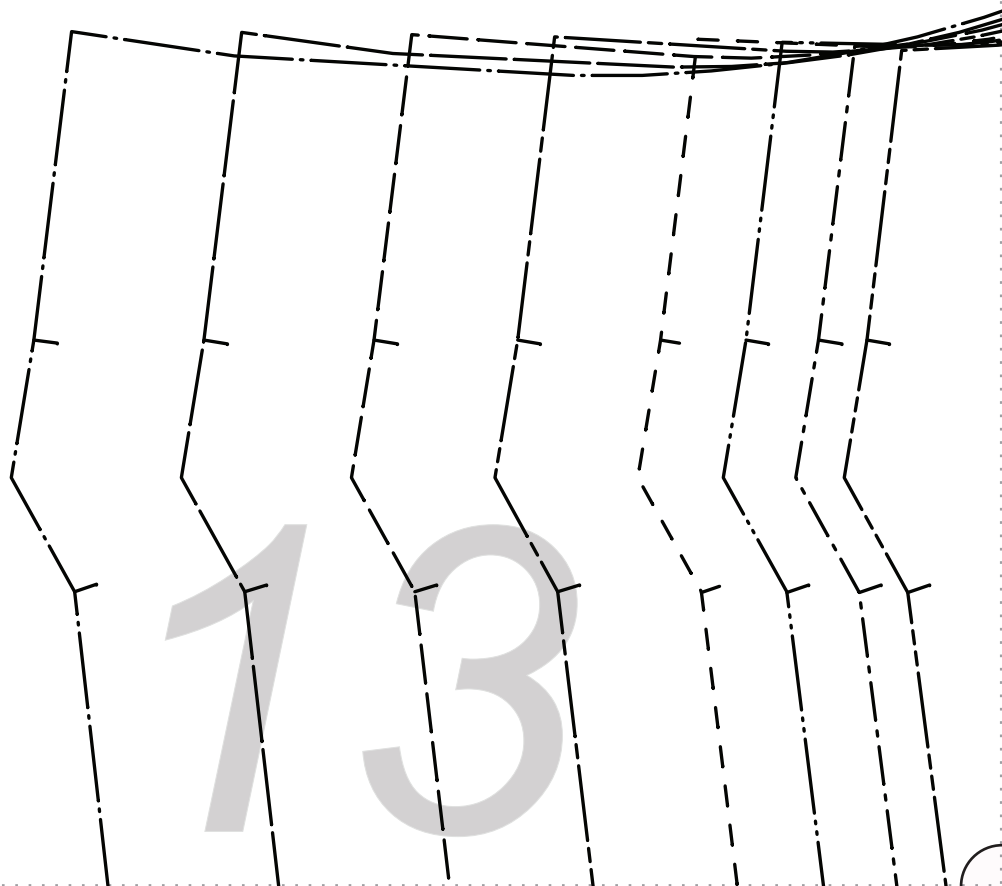
SIZE 16/18

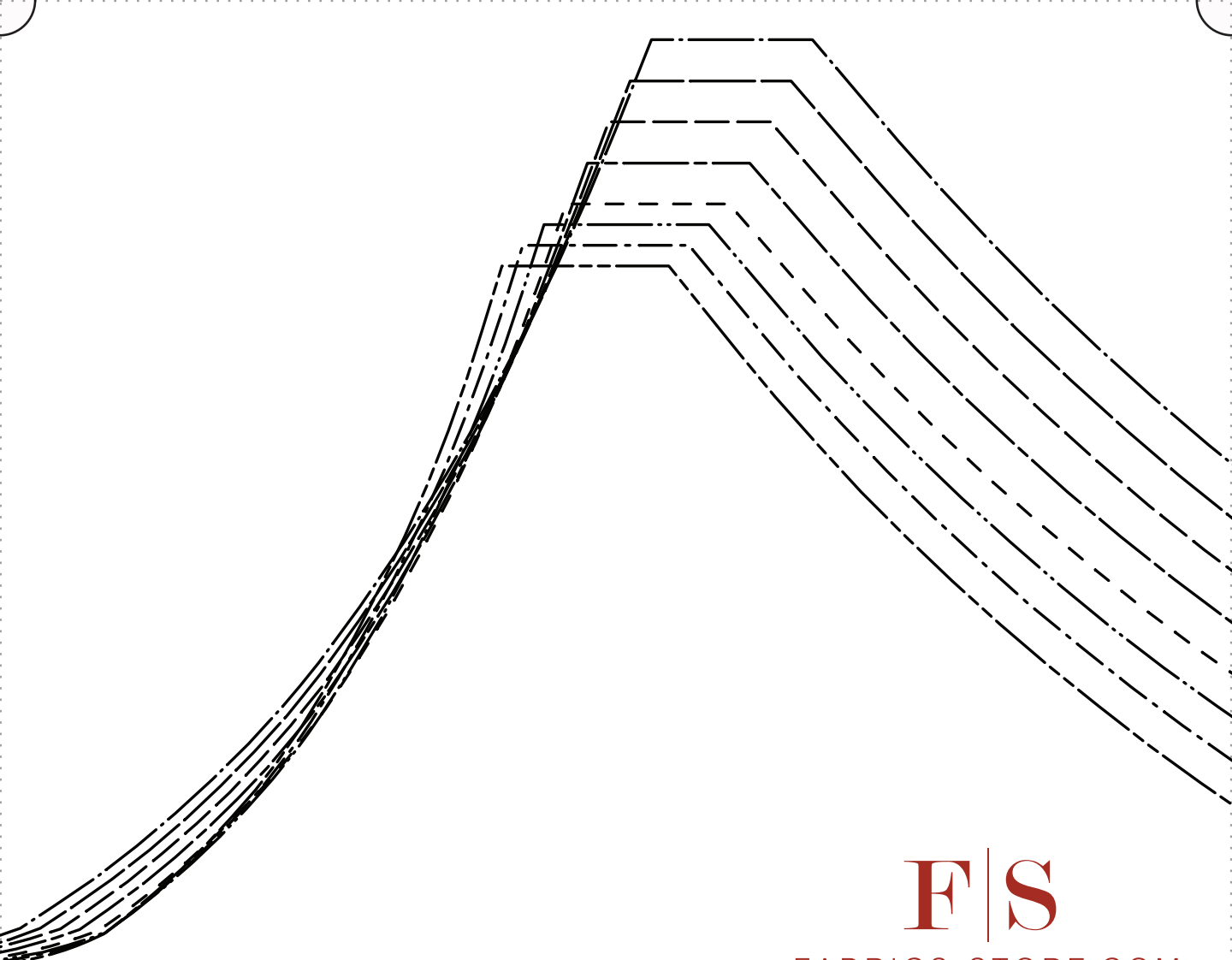
SIZE 20/22

SIZE 24/26

SIZE 28/30

# 12





F|S

FABRICS-STORE.COM

*Our linen is nothing short of addicting*

DART POINT ○

“Luna”

#FabricStoreLunaPattern

SIZE 0/2 \_\_\_\_\_

SIZE 4/6 \_\_\_\_\_

SIZE 8/10 \_\_\_\_\_

SIZE 12/14 \_\_\_\_\_

SIZE 16/18 \_\_\_\_\_

SIZE 20/22 \_\_\_\_\_

14

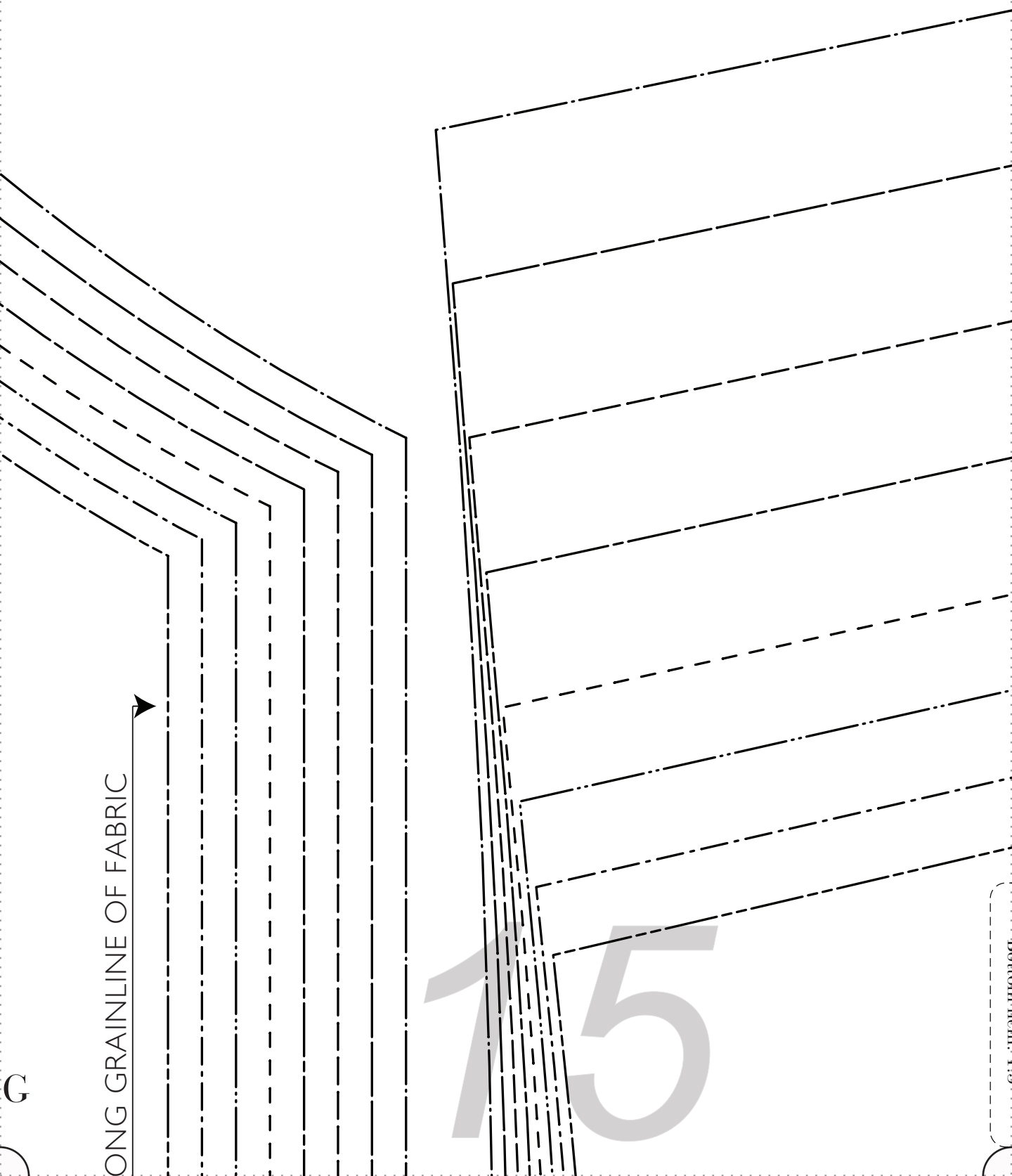
FRONT BODICE  
CUT 1 ON FOLD

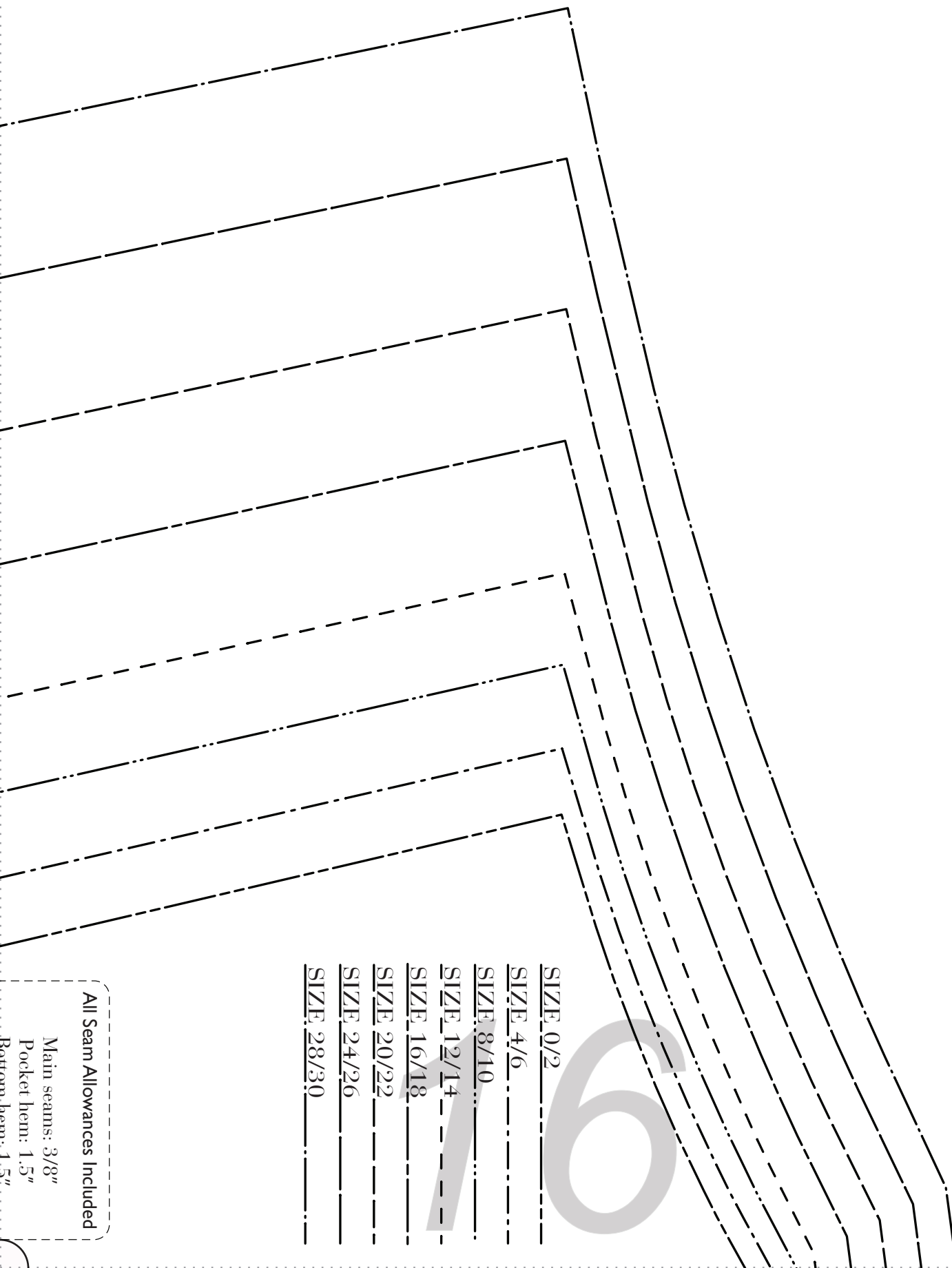
FRONT BODICE LINING  
CUT 1 ON FOLD

LONG GRAINLINE OF FABRIC



15





SIZE 0/2

SIZE 4/6

SIZE 8/10

SIZE 12/14

SIZE 16/18

SIZE 20/22

SIZE 24/26

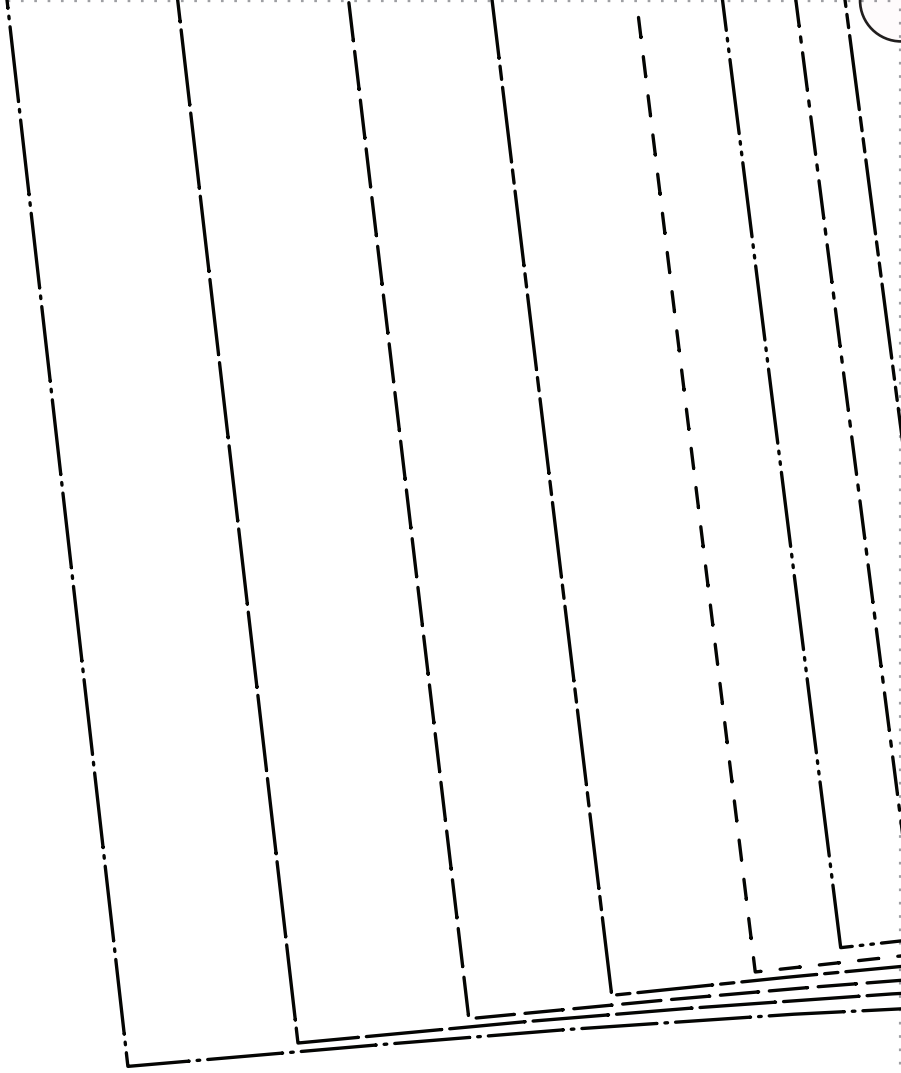
SIZE 28/30

All Seam Allowances Included

Main seams: 3/8"

Pocket hem: 1.5"

Bottom hem: 1.5"



17

SIZE 20/22

SIZE 24/26

SIZE 28/30

All Seam Allowances Included

Main seams: 3/8"

Pocket hem: 1.5"

Bottom hem: 1.5"

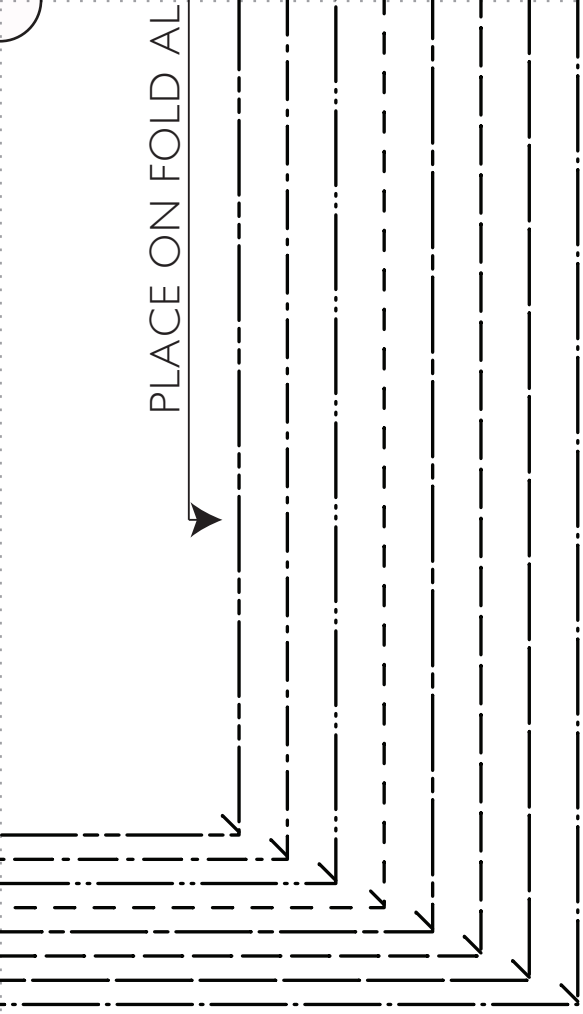
18

**BACK BODICE LINING**  
**CUT 1 ON FOLD**

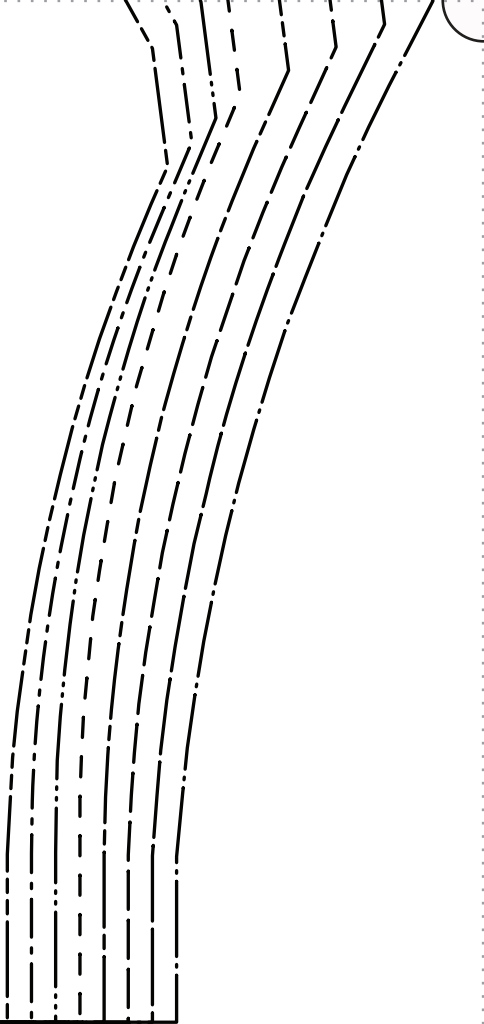
PLACE ON FOLD



PLACE ON FOLD







F|S

FABRICS-STORE.COM

*Our linen is nothing short of addicting*

“Luna”

#FabricsStoreLunaPattern

BACK BODICE  
CUT 1 ON FOLD

LD ALONG GRAINLINE OF FABRIC

20

---

# *Thank you*

---

*We work hard on making our patterns beautiful  
enough to meet your standards.*

*If you feel like sharing praise or helpful criticism,  
please send us your comments to [ask@fabrics-store.com](mailto:ask@fabrics-store.com)*