

F|S

FABRICS-STORE.COM

*Our linen is nothing short of addicting*

# CASS PANT



## MINIMALIST-CHIC

*Charged with the ability to skim over curvy hips and elongate the silhouette, the wide-leg culottes are as comfortable as they are versatile.*

Available in Ladies Sizes 0/2 to 28/30

866.620.2008 ASK@FABRICS-STORE.COM FABRICS-STORE.COM

---

# CASS PATTERN

---

*If you are interested in trying out this cool style without paying the store price tag, then our Cass Culottes sewing pattern is for you! With its high rise, wide legs, hidden inseam pockets, and elastic waistband, it is probably the most comfortable pair of culottes you'll ever own.*

*Sized for ladies 0/2 to 28/30*

*Simple step-by-step instructions on our blog  
The Thread @ [Fabrics-Store.com](http://Fabrics-Store.com)*

---

MASHA IS WEARING 44C22 RIM SOFTENED - 100% LINEN - HEAVY (7.1 OZ/YD<sup>2</sup>)



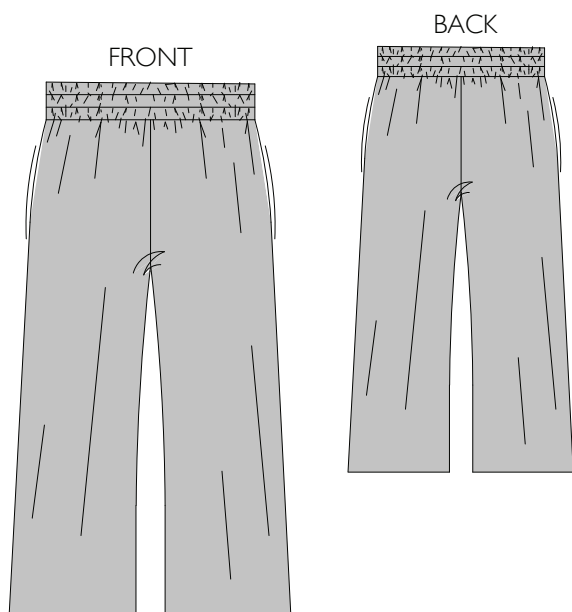
Our lovely model Masha is wearing Size 4/6.

# PATTERN DETAILS

#FABRICSSTORECASSPATTERN

## CASS PATTERN

Ladies Duo Sizes: 0/2 to 28/30



- Elastic, pull-on waistband
- High waist
- Hidden inseam pockets
- Wide legs
- Cropped length

## SEWING INSTRUCTIONS

This pattern is featured on our blog “The Thread” at [Fabrics-Store.com](http://Fabrics-Store.com). There you will find step-by-step photo instructions and can ask questions, post comments, or share your progress. Simply visit: [blog.fabrics-store.com](http://blog.fabrics-store.com) and enter “Cass Pattern” in the search box.

## SIZING & YARDAGE

Ladies Size Guide Based on Body Measurements in Inches

Size	0/2	4/6	8/10	12/14	16/18	20/22	24/26	28/30
Bust	33-34	35-36	37-38	39-40	42-44	46-48	50-52	54-56
Waist	25-26	27-28	29-30	31-32	34-36	38-40	42-44	46-48
Hip	35-36	37-38	39-40	41-42	44-46	48-50	52-54	56-58

Finished Garment Measurements - Approximate in Inches

Size	0/2	4/6	8/10	12/14	16/18	20/22	24/26	28/30
Waist*	36	38	40.5	43	47	51	55.5	60
Hips	37	39	41.5	44	48	52	57.25	62.5
Inseam	23	23	23	23	23	23	23	23

\*Elastic waistband- fit to preference.

Estimated Yardage - 54" Width Linen

Size	0/2	4/6	8/10	12/14	16/18	20/22	24/26	28/30
Yardage*	2 yards			2.75 yards				

\*Allow up to 10% extra fabric for shrinkage.

ALL SEAM ALLOWANCES ARE INCLUDED AND NOTED ON THE PATTERN AND IN THE TUTORIAL.

## “Cass” Sewing Pattern

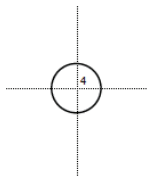
For instructions visit: [blog.fabrics-store.com](http://blog.fabrics-store.com) and enter “Cass Pattern” in the search box.

**2 Inch  
Square to  
Check Print  
Accuracy**

### PRINT ONLY THIS PAGE FIRST TO CHECK SCALE

**IMPORTANT! PRINT AT ACTUAL SIZE, 100%, OR NO SCALING.**

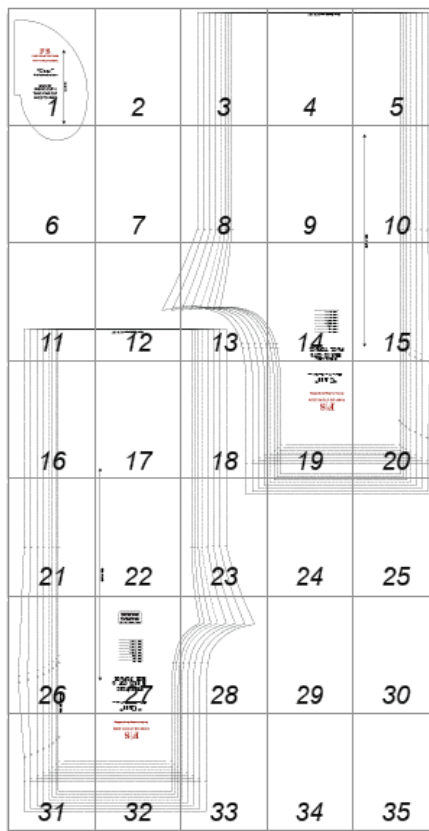
*Formatted for paper sizes A4 and Letter.*



Simply overlap the page margins and align the markings in each corner to complete the circle and tape in place.

#### Layered PDF:

This pattern has embedded layers so you can print all sizes or a single size. See your .pdf viewers 'Layers' menu.





F|S

FABRICS-STORE.COM

*Our linen is nothing short of addicting*

“Cass”

#FabricStoreCassPattern

POCKET  
FABRIC: CUT 4  
TWO PAIR CUT  
FACE TO FACE

GRAINLINE

1

2

3



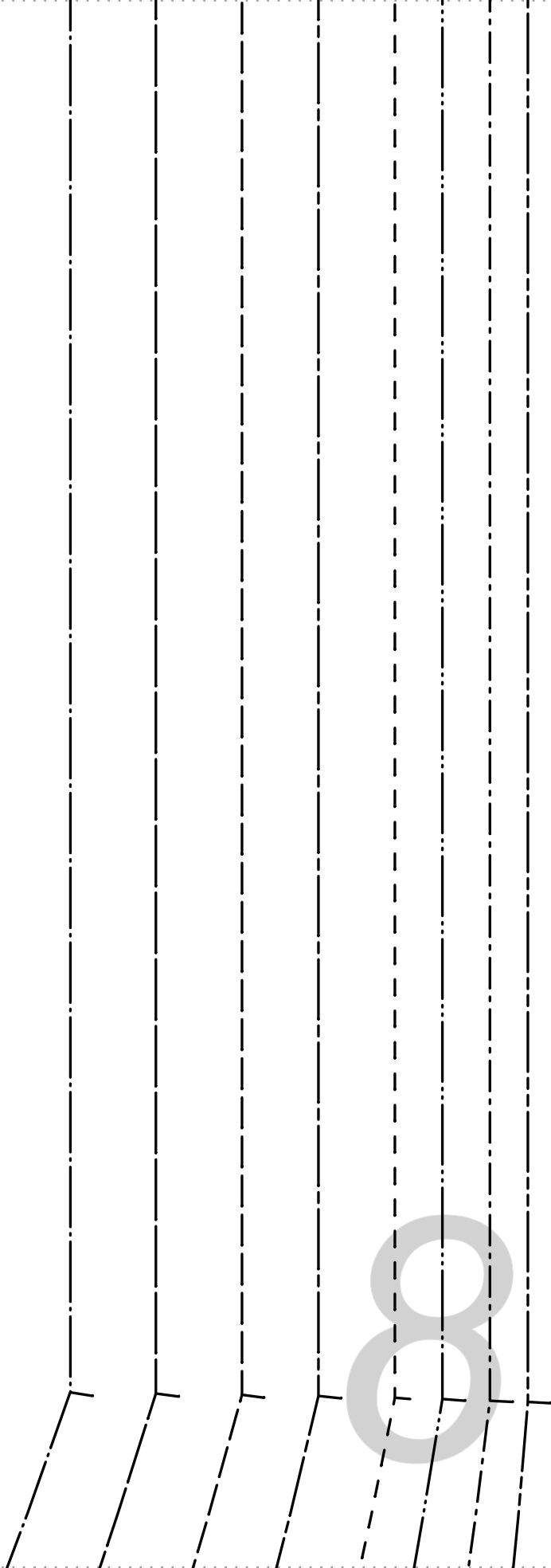
Hem: Double-turn 1/2" + 1 1/2"

4

5

6

7

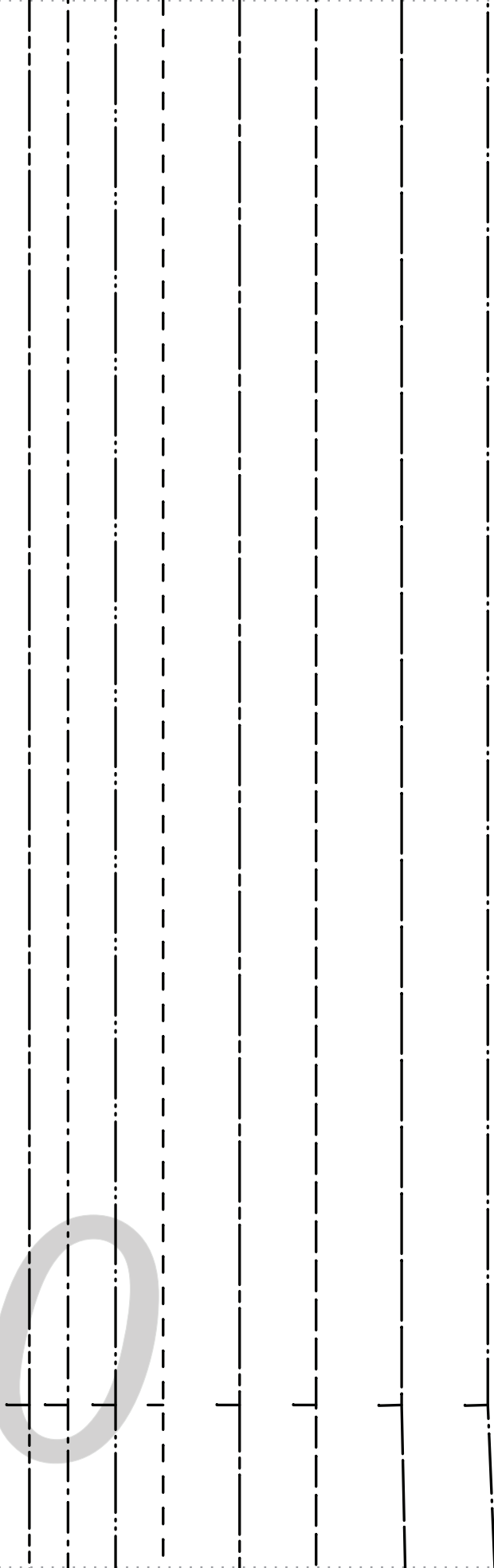


9



GRAIN

10

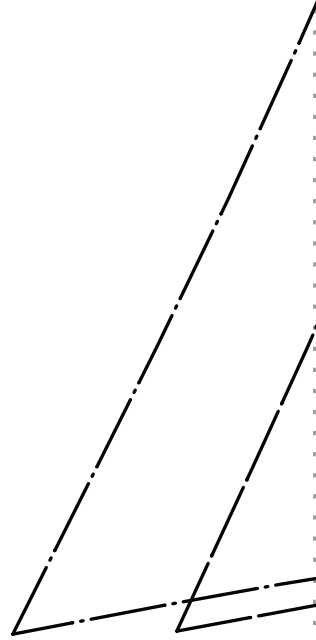


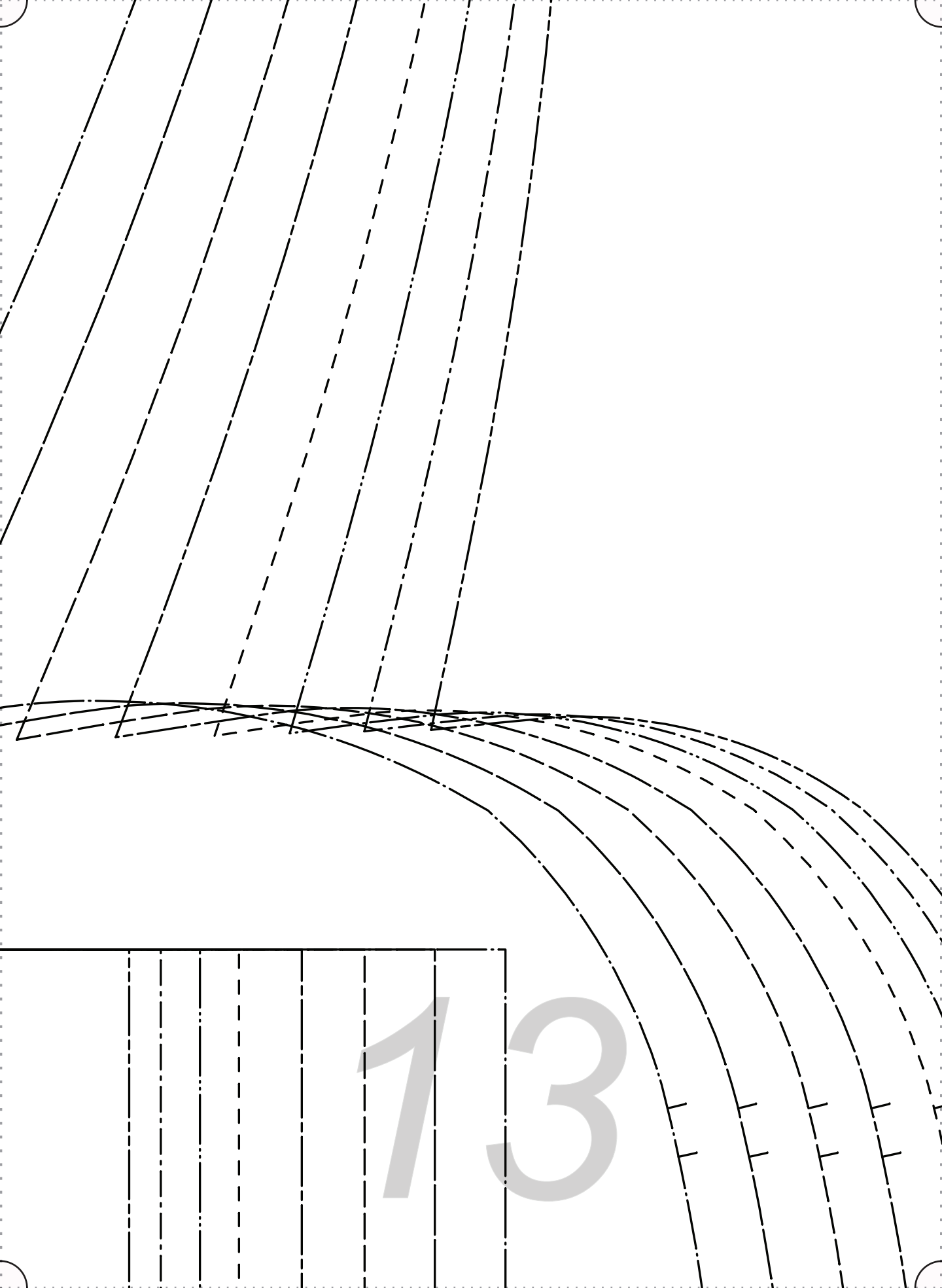
11



Hem: Double-turn  $\frac{1}{2}$ " +  $1 \frac{1}{2}$ "

12





13

BACK LEG

FABRIC: CUT 2

FACE-TO-FACE

14

SIZE 0/2

SIZE 4/6

SIZE 8/10

SIZE 12/14

SIZE 16/18

SIZE 20/22

SIZE 24/26

SIZE 28/30

LINE



15

1 5

1 5

1 5

1 5

1 5

16

17



18

# “CASS”

#FabricsStoreClassPattern

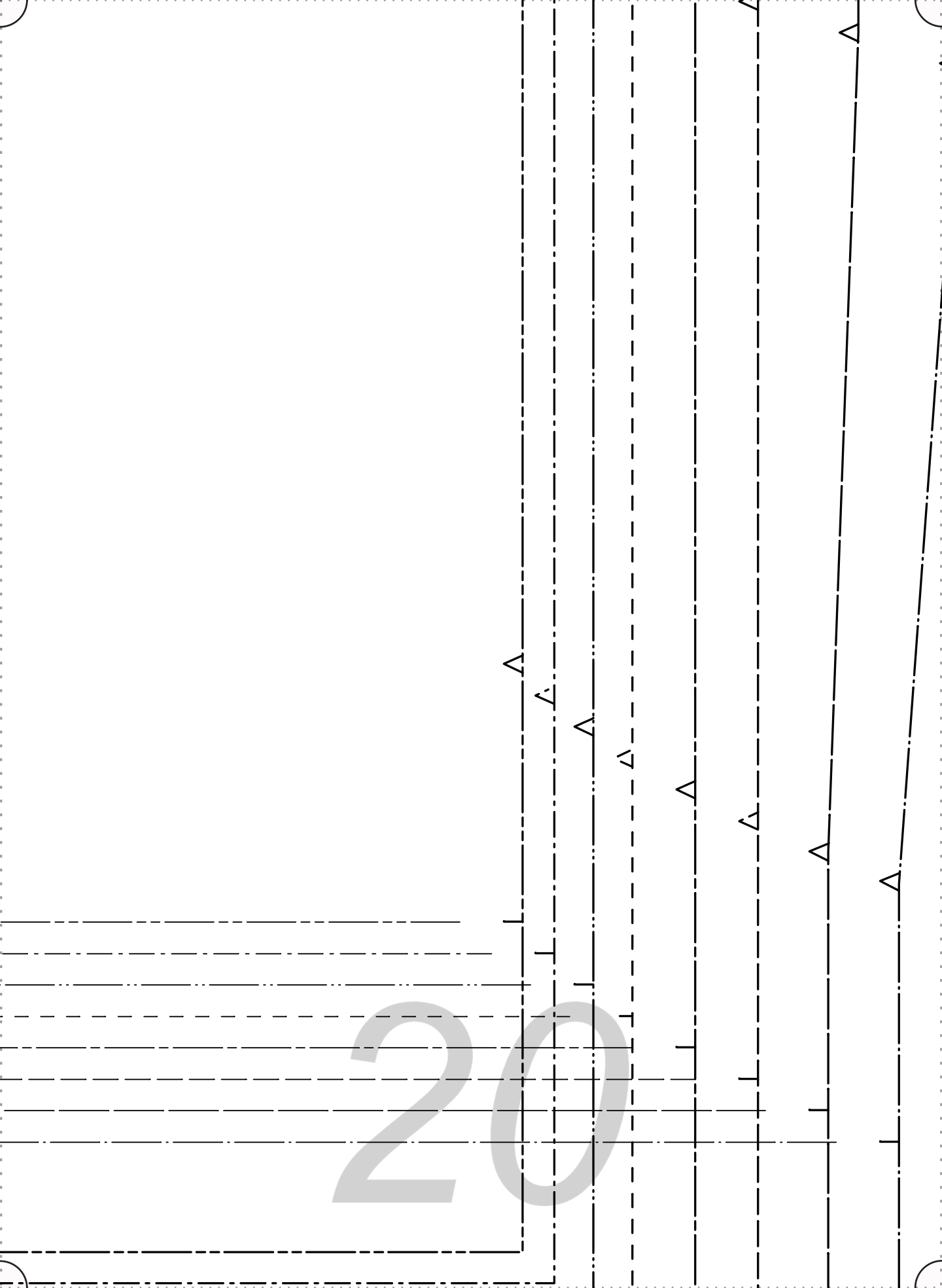
*Our linen is nothing short of addicting*

FABRICS-STORE.COM

# F|S

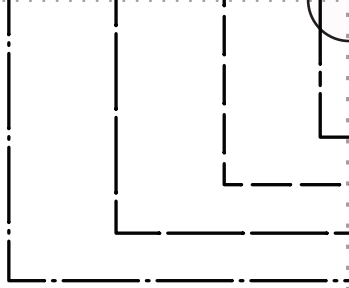
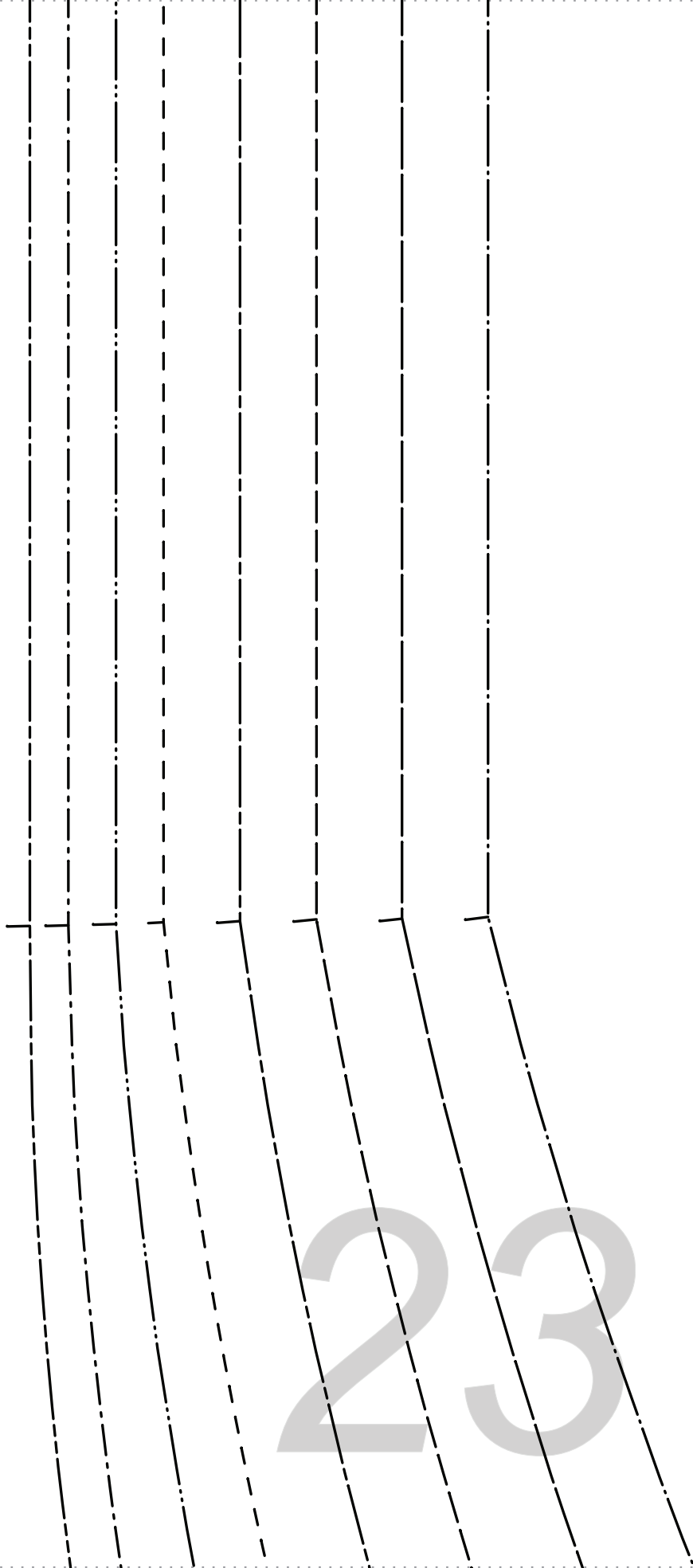
# 19





21

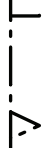
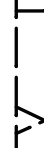
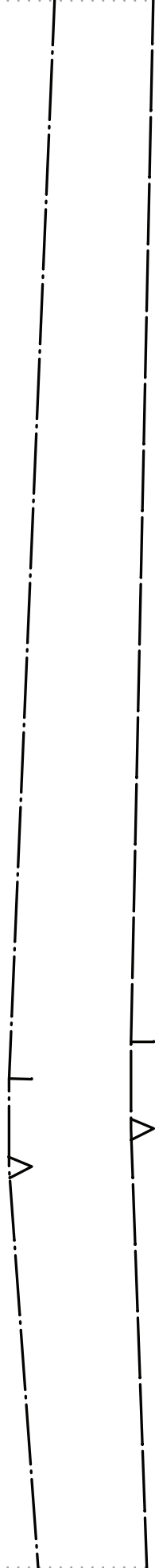
22



23

24

25



26

POCKET OPENING

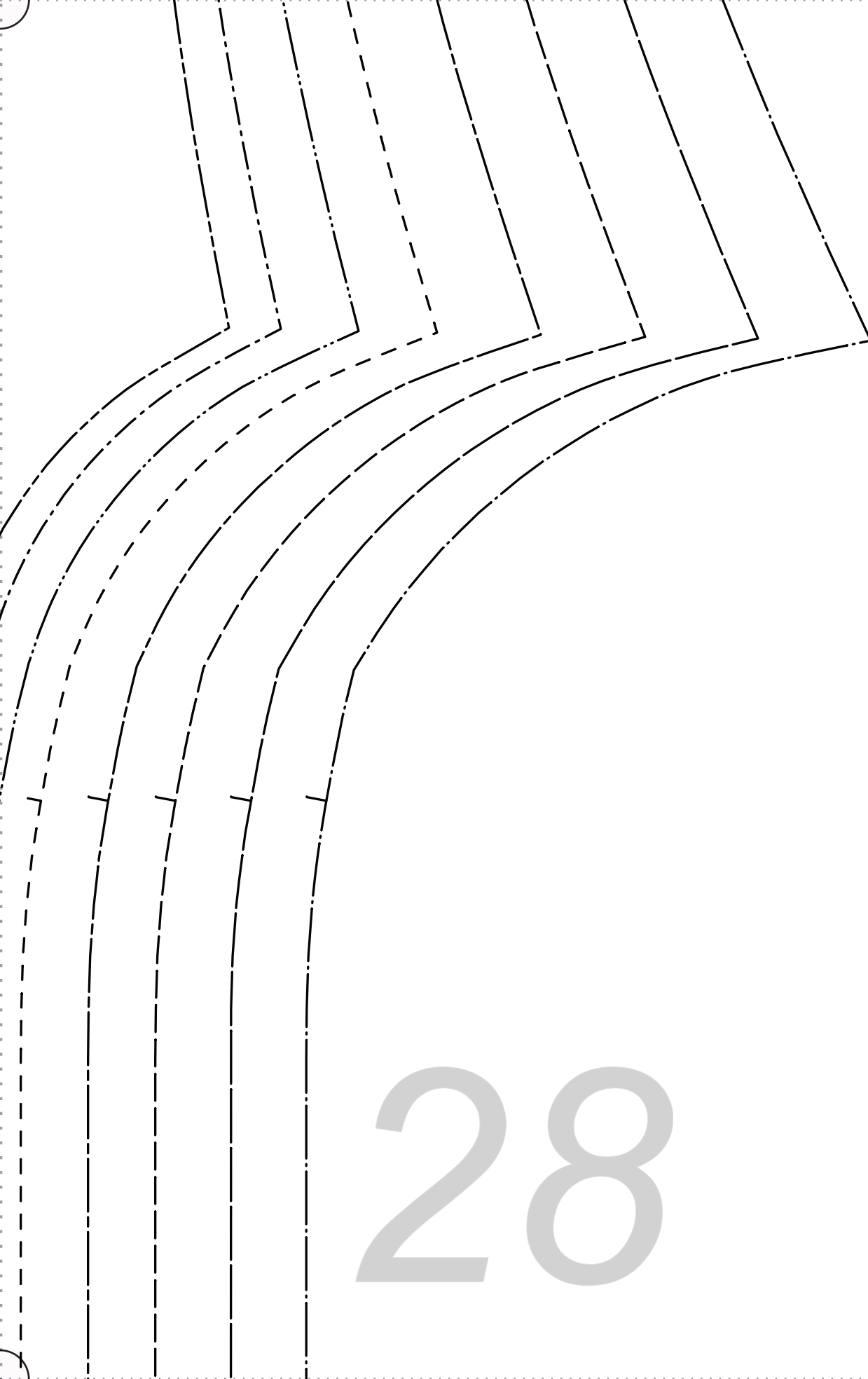
FRONT LEG  
FABRIC: CUT 2  
FACE-TO-FACE

SIZE 0/2
SIZE 4/6
SIZE 8/10
SIZE 12/14
SIZE 16/18
SIZE 20/22
SIZE 24/26
SIZE 28/30

All Seam Allowances Included  
Seam allowances (s.a.)  
are 3/8" unless otherwise  
noted on pattern or in  
the instruction booklet.



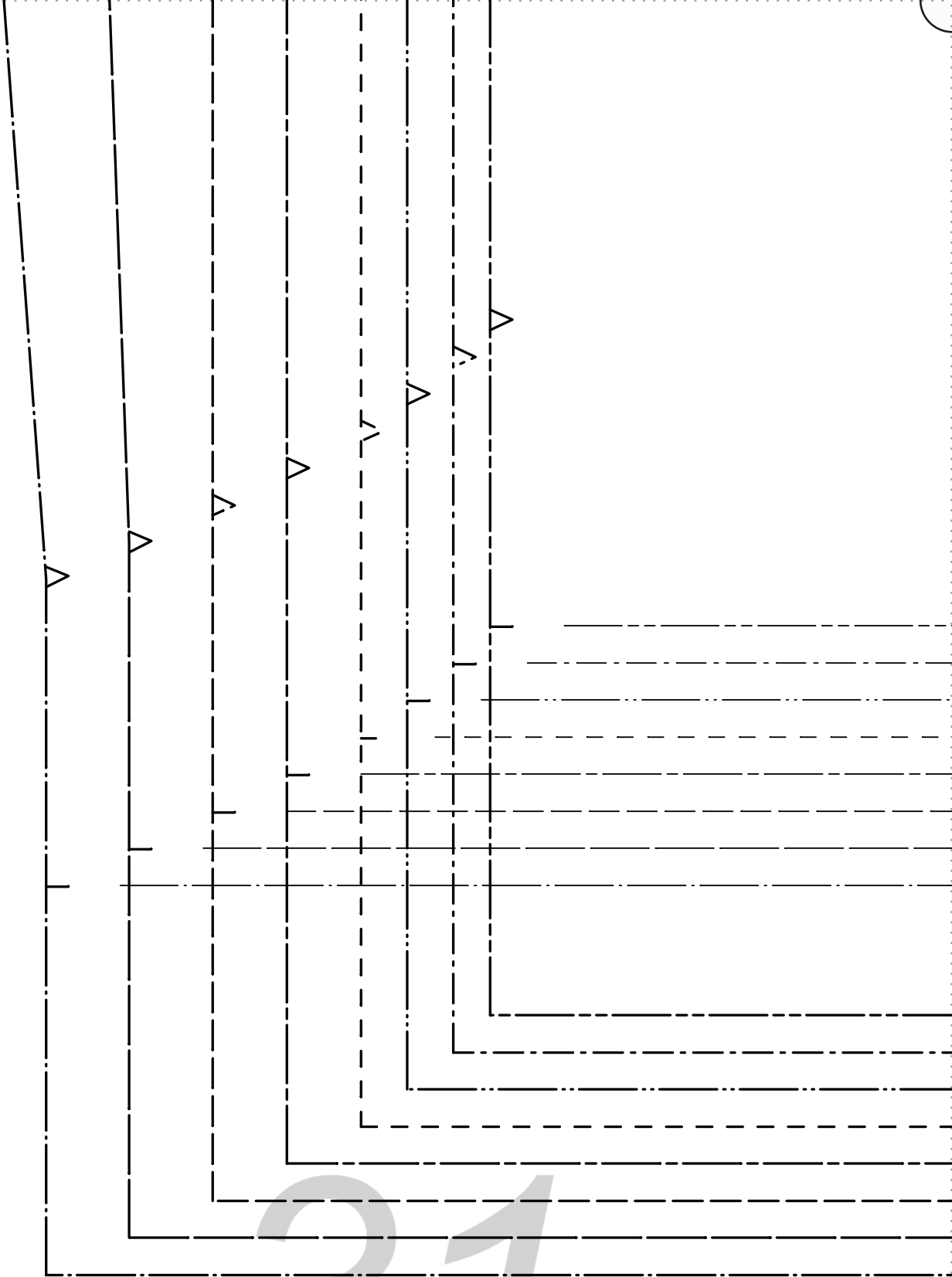
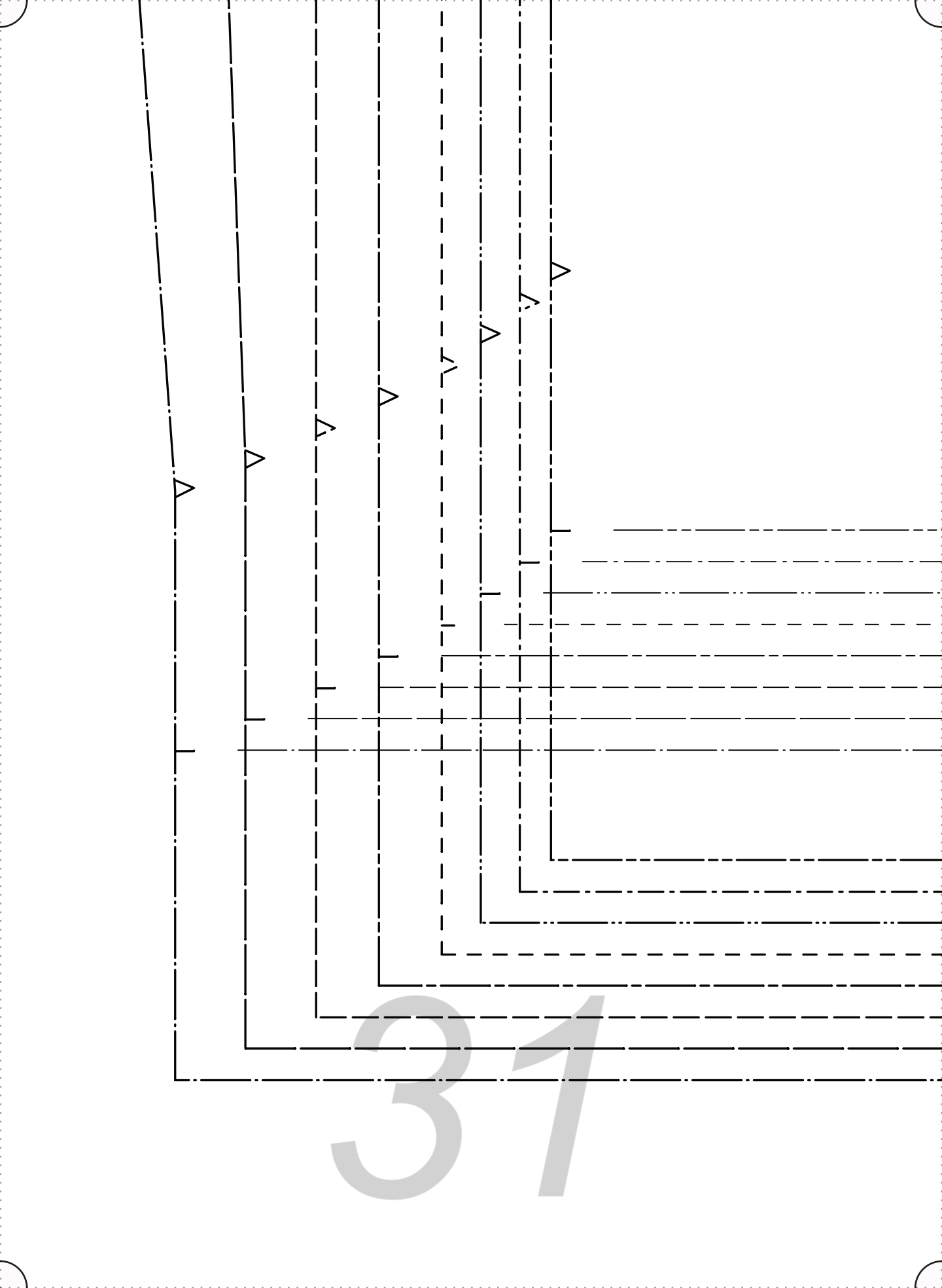




28

29

30

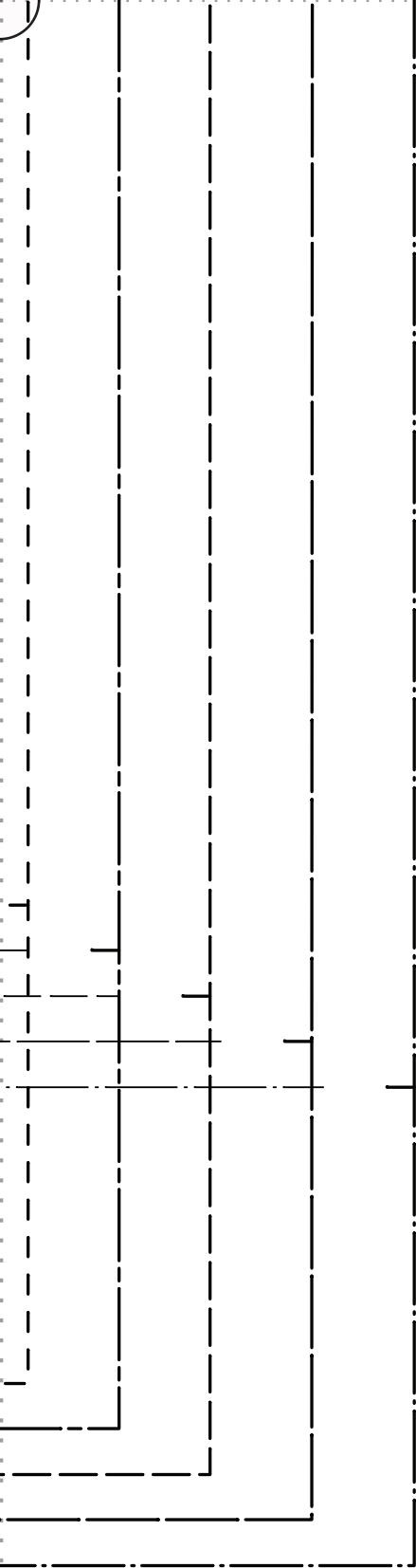


*Our linen is nothing short of addictive*

FABRICS-STORE.COM

F|S

32



33

34

35



---

# *Thank you*

---

*We work hard on making our patterns beautiful  
enough to meet your standards.*

*If you feel like sharing praise or helpful criticism, please  
send us your comments to [ask@fabrics-store.com](mailto:ask@fabrics-store.com)*